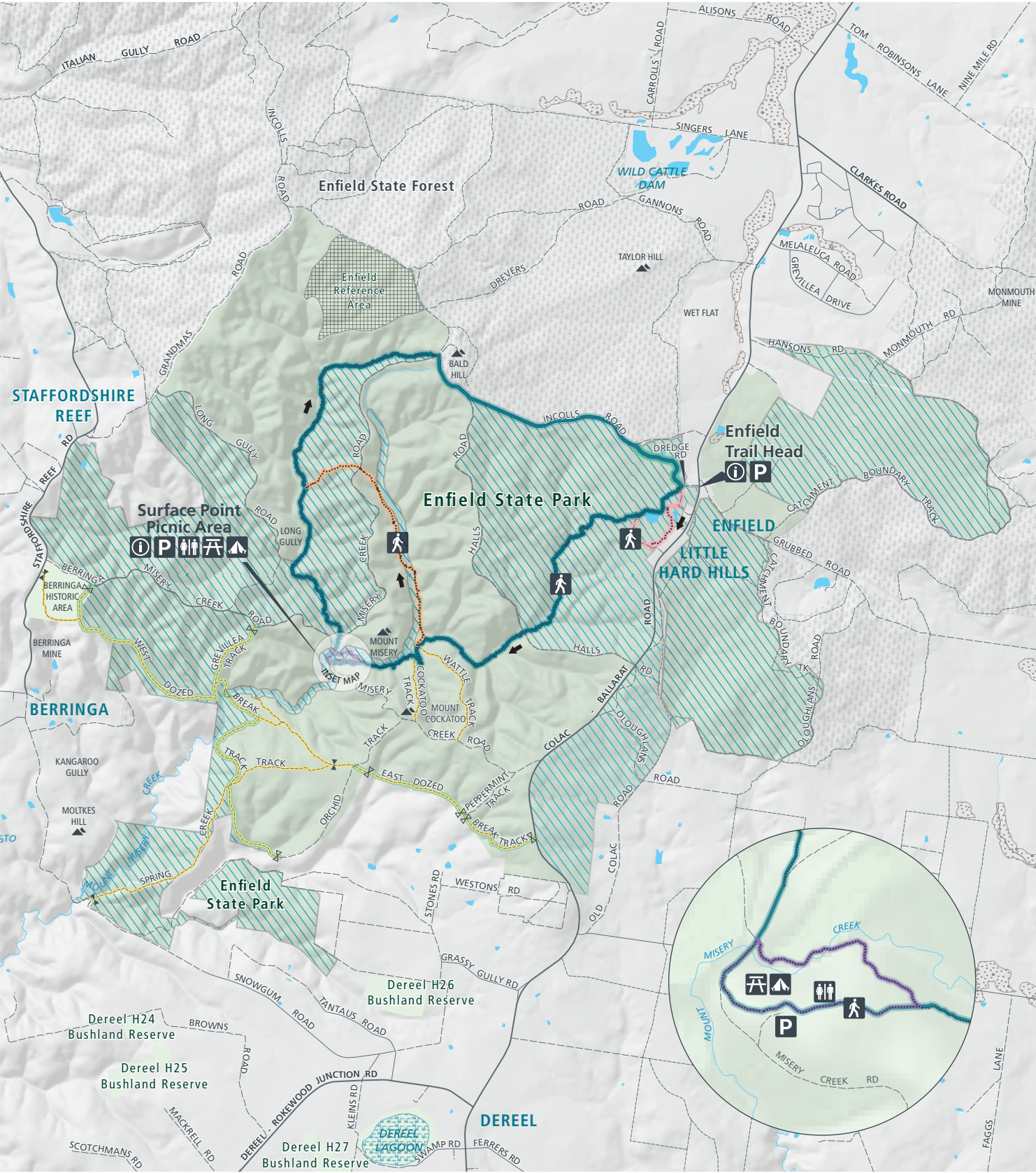
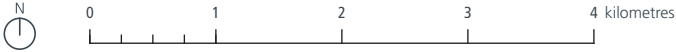


# Enfield State Park



- |                     |                                  |                   |  |                       |
|---------------------|----------------------------------|-------------------|--|-----------------------|
| Parking             | Gates (seasonal closure)         | Unsealed road     | Searls Loop 2.3km  | State park/reserve    |
| Toilets             | Gates (management vehicles only) | Sealed road       | Surface Point Loop 1km   | State forest          |
| Picnic table        | Seasonal road closure            | Main road         | Long Gully Loop 6.6km  | Reference area        |
| Camping (tent only) | MVO                              | Walking track     | Fossicking Zone. Fossicking is also permitted within a 20m strip on either side of Mount Misery Creek. | Waterbody             |
| Walking trail       | 4wd                              | Enfield Loop 15km |  | Subject to inundation |

[www.parks.vic.gov.au](http://www.parks.vic.gov.au)  
Disclaimer: Parks Victoria does not guarantee that this data is without flaw of any kind and therefore disclaims all liability which may arise from you relying on this information. Cartography by Parks Victoria September 2021.  
For mobile App search for Avenza PDF Maps



Zone Fossicking Area – A 20 metre strip either side of Mount Misery Creek is included.