



Bunyip State Park

Visitor Guide

Bunyip State Park is a haven for outdoor activity with plenty of tracks and trails for all to enjoy. Breathe in the fresh air and enjoy native plants and animals on scenic walks, trail rides and four-wheel drive tracks. See a mosaic of green, from heathland on river plains, to Mountain Ash Forest covering steep slopes.

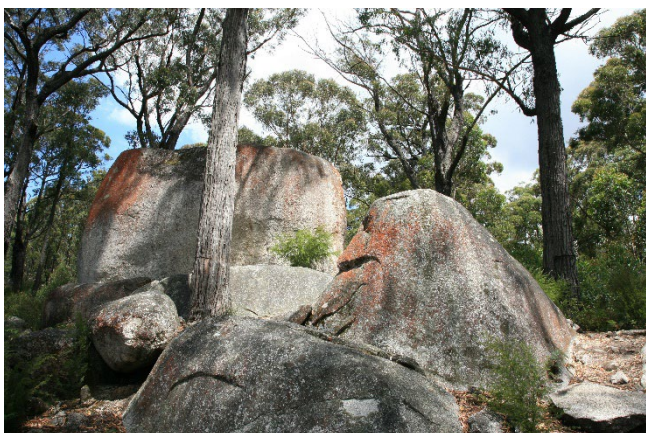


Welcome

Bunyip State Park is part of an Aboriginal cultural landscape that includes the traditional Country of the Bunurong People and the Wurundjeri People. Parks Victoria respects the deep and continuing connection that Traditional Owners have to these lands and waters, and we recognise their ongoing role in caring for Country.

Getting there

Bunyip State Park is located 65km east of Melbourne. In the foothills of the Great Dividing Range, this significant area is within easy access of Melbourne.



Four Brothers Rocks

As an important park on its own, it is also complemented by connection to Beenak and Labertouche State Forests.

You can get to Bunyip State Park via Gembrook or Woori Yallock, or from the Princes Freeway past Pakenham.

When approaching from Gembrook or Woori Yallock, trail bike riders and four-wheel drivers can enter via Beenak East Road and Black Snake Creek Road for access to tracks and unloading areas.

Horses can be transported to Cannibal Creek Horse Unloading Area.

What makes Bunyip special

As a region rich in large trees, the area was used for the timber industry from the late 1800s until 1990. To better protect its natural values, in 1992 an area of 16,600 hectares was reserved as state park.

The park was named after the “bunyip”, an Aboriginal mythical creature that was thought to live along the river that flows through the park.

Bunyip State Park has amazing biodiversity, with a huge variety of native plants and animals. Like many areas of Australian bush, here a delicate balance of fire prevention and fire regimes are important. Many native species rely on fires to reproduce and regenerate but cannot withstand recurring, extreme temperature bushfires. Most of the park was burnt in 1939 and more than half in 2019. With a lot of work and recovery time, most of the vegetation groups have now returned.



Male Superb Fairy Wren

Swamp heathland covers much of the naturally moist areas, where heath and Prickly Tea-tree are found. The insect eating Southern Emu Wren is the smallest of the birds inhabiting this area. It has a unique long barbless tail of only six feathers.

The heathy woodland has some interesting plants, ranging from the taller Mealy Stringybark trees to the understorey of Hairpin Banksia, Furze Hakea and rare Swamp Bush-pea.

Foothill forests of Silvertop and Messmate are found higher up. Here you can see White-throated Tree Creepers hopping around tree trunks searching for insects. Below is a dense layer of smaller plants including Common Correa, Hop Goodenia and Dusty Miller, where Yellow-rumped Thornbills and Superb Fairy Wrens feed. Mountain Ash, the tallest flowering plants in the world, grow on the steep southern slopes in the northern end of the park.

Most of the animals which inhabit the park, are active at night, such as possums, bandicoots, antechinus, bats, owls and gliders. During the day you may be lucky enough to catch a glimpse of a Swamp Wallaby in the forest shadows or a Goanna basking in the sun.



Drive only on formed, open roads

Recreational zoning

Bunyip State Park encourages a wide range of recreational activities. Recreation zones exist to minimise conflicting activities, and support everyone to have a safe and enjoyable time.

North and south recreational zones are separated by Black Snake Creek Road. The northern sections of the park are suitable for four-wheel driving and trail bikes. The southern section caters for passive recreational activities such as walking, horse riding and cycling.

- Please observe signs for 'management vehicles only', 'walkers only' and 'horses, walkers and bicycles only'
- Horse and mountain bike riding is permitted on roads and designated tracks, but is not permitted on 'Walkers Only' tracks or in picnic areas.
- All roads and tracks in the park are public roads. Vehicles and motorbikes must be road registered and drivers and riders must be licensed.

Things to see and do

You can explore this park in a variety of ways with a whole range of walking trail loop options. Here are some suggested routes:



Four Brothers Rocks

500m, 10mins one way

A short walk from the Four Brothers carpark. A wide management vehicle track will lead you to the spectacular formation of huge granite tors. On a clear day the view includes Black Snake Creek Valley, Blue Range and Seven Acre Rock. This is a significant cultural area for the Bunurong People. Take care when you are walking around this special place.



Lawson Falls Walk

750m, 15mins one way

Hidden in the north-east corner of the park, the Lawson Falls Circuit Trail is a short walk from the nearby picnic ground to reach the only waterfall within Bunyip State Park. The trail meanders through dense bush and lush fern gullies before emerging at the humble cascades of Lawson Falls.

Extend your walk by using Discovery Track as a loop. Taking approximately 45 minutes to complete the circuit.



Mortimer Nature Walk

1.2km return, 45min loop

Starting from Mortimer Camping & Picnic Area, a self-guided nature walk introducing the plants, animals and other features of William Wallace and Diamond Creeks. Learn about the local environment in a short, easy loop walk. Beautiful scenery through different forest types and healthy woodland. Keep your camera handy!



Buttongrass Nature Walk

3.5km return, 1hr loop

An accessible walk through a wet heathland area, starting at Guide Track. At its best in spring, you can see a variety of flora including hakeas, wattles, tea-trees, mistletoe, swamp bush pea and buttongrass. The scenery changes dramatically around this loop. The walk offers excellent birdwatching opportunities.



Remember a hat when you walk



Ferres Silvertop Loop

4.3km, 1.5hrs return

Starting from Mortimer Picnic Ground, follow Ferres Track. At the top of the steady climb turn left onto Silvertop Ridge Track and return to Mortimer via Triangle Road. A medium challenge hike showcasing the forest beauty of Bunyip State Park.

There are many other hiking options available for you in this park. Make sure you plan your trip and have maps available.

Camping areas

Relax with your friends at Mortimer Camping & Picnic Area, Nash Creek Campground, Dyers Camping & Picnic Area or Lawson Falls Picnic Ground.

Fees and bookings are not required for campgrounds within Bunyip State Park; camping is on a first in, first-served basis.

There are no rubbish bins provided in this park. Please take your rubbish home for recycling and disposal.

Nash Creek Campground

A variety of sites that are suitable for tents and swags, as well as areas for campervans, camper trailers and motorhomes.

This campground has picnic tables, a unisex non-flush (drop) toilet and fireplaces.

Bring your own firewood and drinking water.



There are many lovely views in the park

Bunyip Weir (Freemans Mill) Camping Area

Hike-in only. Camp in an open, grassy area near the Bunyip River, 6km walk from the car park off Bunyip River Road. Shared picnic table installed, but no toilet facilities or potable water.

Forest Road Camping Area (unsuitable for caravans)

Well located for recreational vehicle access to the park. The site has a unisex non-flush (drop) toilet. It is suitable for campervans or campertrailers, but not accessible for caravans. Not suitable for family camping. Bring your own water.

Dyers Camping & Picnic Area

Camp amongst giant Mountain Grey Gums, close to Back Creek. A lovely grassy area suitable for tents. Fireplaces, picnic tables and a unisex non-flush (drop) toilet. No potable water. Bring your own firewood.

Mortimer Camping Ground and Picnic Area

An open grassy area suitable for tent camping. Camping is restricted to the western section of this visitor area, and includes designated fireplaces, toilets and picnic tables. No potable water. Bring your own firewood.

Four-wheel driving & trail bike riding

This is a great park for trail bike riding and four-wheel driving in designated areas. Recreation vehicle touring experiences are available to suit a variety of experience and skill levels.

Seasonal road closures are applied in this park from the King's Birthday holiday to Melbourne Cup Weekend. Areas may also be closed after major storms or other emergencies.

Bike unloading area are located at Helmet Track and Forest Road (see map).

Refer to the Four Wheel Drive & Trail Bike Riding web page for more information:

www.parks.vic.gov.au/places-to-see/parks/bunyip-state-park/things-to-do/four-wheel-driving-and-trail-bike-riding-in-bunyip-state-park.

Horse riding

Bunyip State Park is also a great place to enjoy the natural environment with your horse. The start and finish of the trail network is at the gate to Cannibal Creek Track at the Cannibal Creek Horse Unloading Area (off Tynong North Road, Tynong North). Refer to the 'Horse Riding Fact Sheet' on the Bunyip State Park visitor webpage at www.parks.vic.gov.au for more details.

Cardinia Shire Council also has excellent information on trails and facilities. Refer to their Equestrian Strategy 2024–2034 on their website: www.cardinia.vic.gov.au/info/20017/sport_and_recreation/80/horseriding#section-1-our-horseriding-facilities



Enjoy nature while exercising your horse

Caring for the park



Help us look after your park by following these guidelines:

- Four wheel driving off formed roads and closed tracks is not permitted. Seasonal road closures are used to protect the track network in this park.
- Take all rubbish home with you. Rubbish dumping is illegal.
- Do not approach or feed the wildlife.
- Firearms and recreational hunting are prohibited.
- Dogs are not permitted (they are allowed on a lead in Kurth Kiln Regional Park).
- Do not collect plants or animals. Leave them for others to enjoy.
- Light fires only in the fireplaces provided in the picnic and camping areas. Bring your own firewood and drinking water.
- No fires may be lit on days of Total Fire Ban.
- Keep to the constructed tracks.
- No drones are permitted without a Parks Victoria permit.

Fines apply for breaches of park regulations.

Be prepared and stay safe



Bunyip State Park cross both the 'Central' and 'West & South Gippsland' fire districts. Bushfire safety is a personal responsibility. Anyone entering parks and forests during the bushfire season needs to stay aware of forecast fire conditions.

Trees and branches will fall in forested areas. Logs, rocks and large wildlife can create dangerous, unexpected obstacles. Be alert and aware of your surroundings.

There is limited mobile phone coverage in this park. Be prepared by downloading the park map from Avenza before your visit.

Be careful at Four Brothers Rocks. There are no barriers to prevent you exploring, but there is the risk of falling and injury.

Prepare for your visit by wearing suitable clothes, including closed shoes in case of snakes. Also be ready for sudden changes of weather. It is recommended to carry enough drinking water for your walk and not rely on taps or streams.

Avenza maps

Before visiting the park, download free park maps to your smart device. If you don't have the app, you will be prompted to download it (WiFi is recommended). The app uses your phone's GPS location feature to show you where you are, even without a signal. Search for maps by park name. Avenza Maps app link:



Emergencies

For emergency assistance call Triple Zero (000)

If there is a green emergency marker sign near you, read the information on the marker to the operator. This will help pinpoint your location and the fastest access for emergency services.

On Catastrophic Fire Danger Rating days this park will be closed for public safety. Warning signs may be erected, but do not expect a personal warning.

There are multiple ways to check the Fire Danger Rating and days of Total Fire Ban:

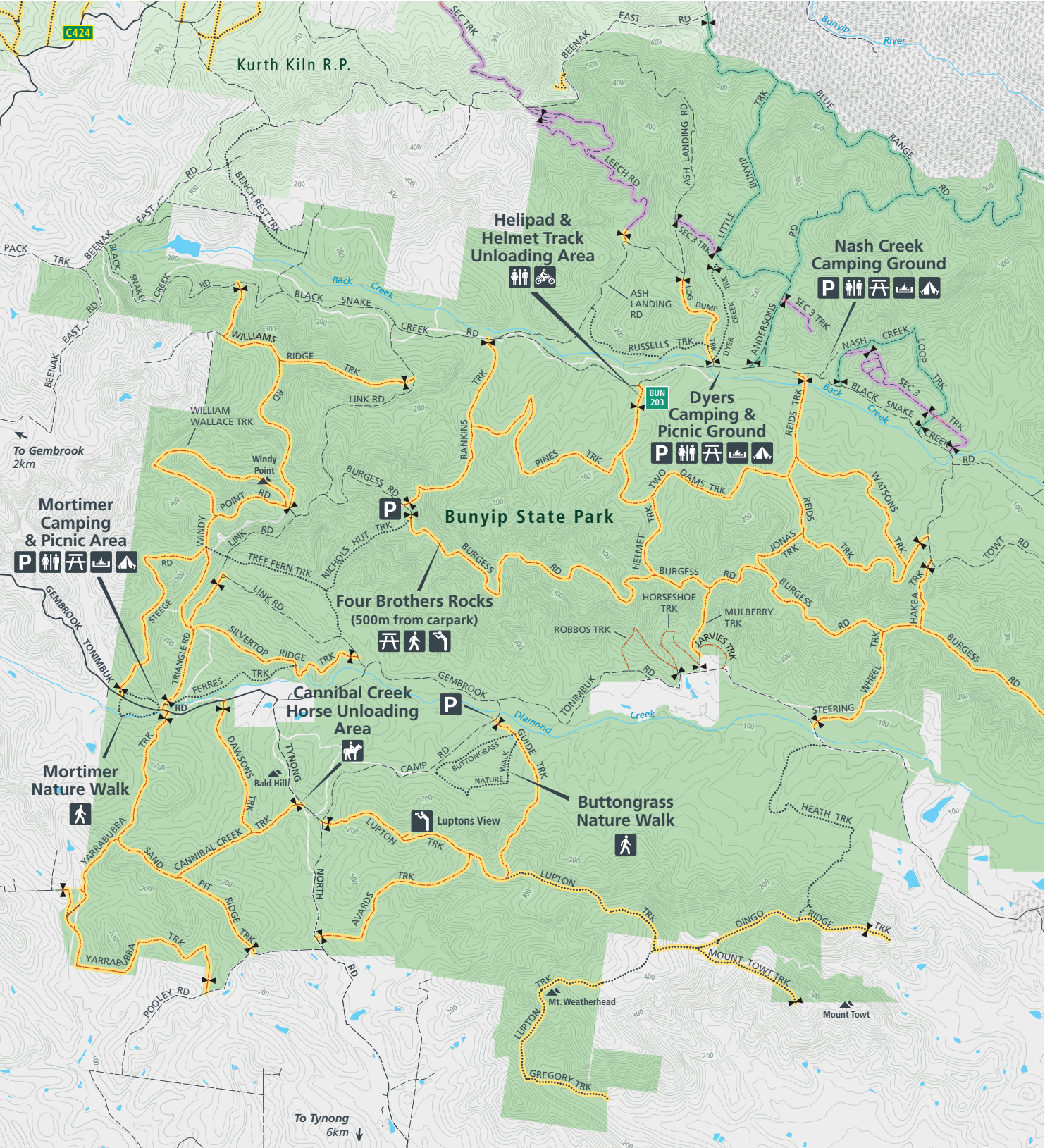
- VicEmergency smartphone app
- VicEmergency Hotline 1800 226 226
- www.emergency.vic.gov.au
- Scan this QR code:




Updated Mar25

Bunyip State Park

West

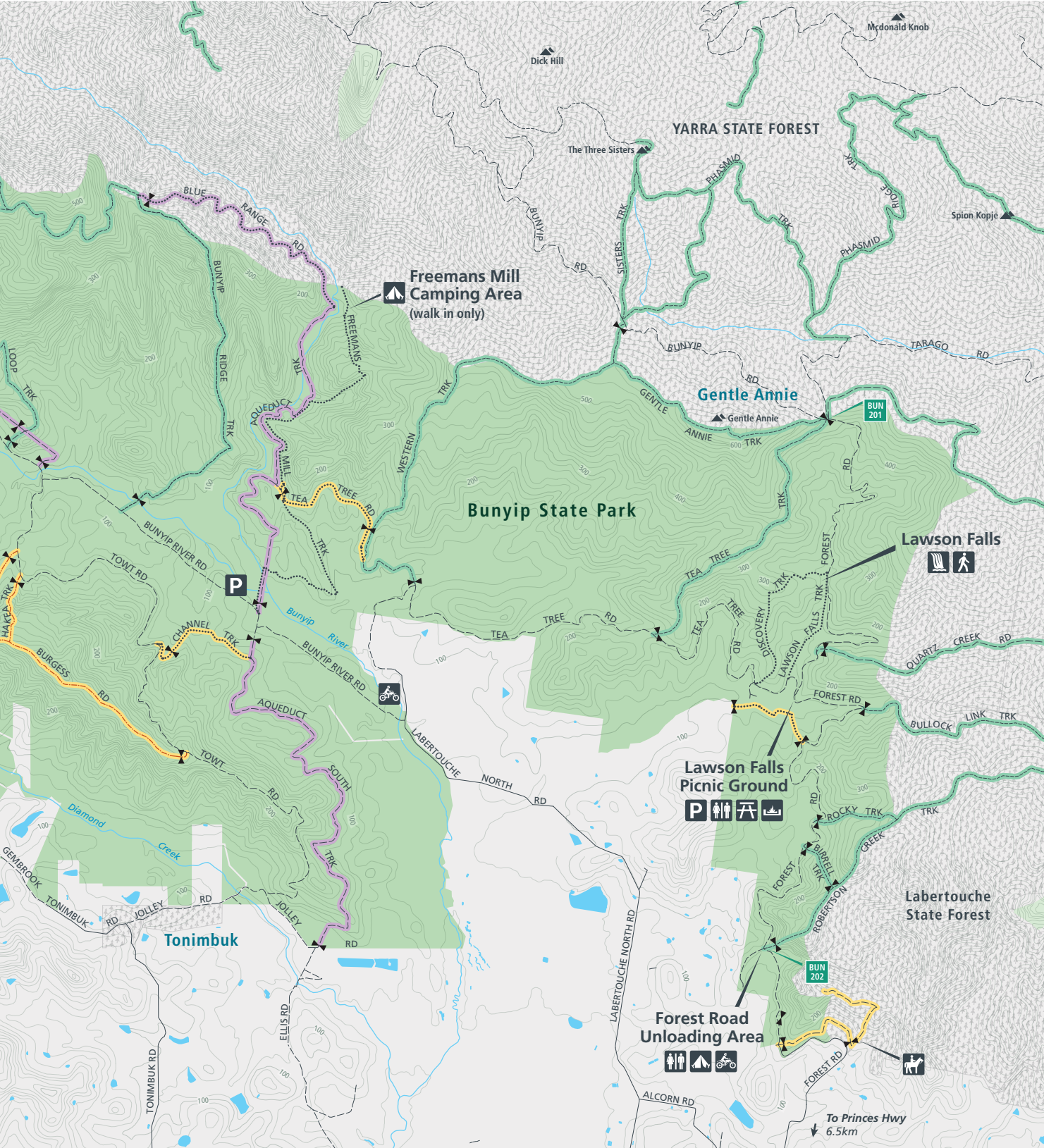






Parking	Horse unloading area	Sealed road	Authorised vehicles only
Toilets	Trail bike unloading area	Unsealed road	100 metre contour interval
Picnic table	Walking track	Walking track	Bunyip State Park
Fireplace	Camping area	Shared path (walking, horse riding, cycling)	Other park/reserve
Lookout	ESTA emergency marker	4WD seasonal closure	State Forest
Waterfall	Gate	Management vehicles only	


Bunyip State Park

East




- **P** Parking

**T** Toilets

**P** Picnic table


**F** Fireplace


**L** Lookout

**W** Waterfall


**H** Horse unloading area


**T** Trail bike unloading area


**W** Walking track

**C** Camping area


**BUN 203** ESTA emergency marker


**G** Gate
-  Sealed road


 Unsealed road


 Walking track


 Shared path (walking, horse riding, cycling)

 4WD seasonal closure


 Management vehicles only

 Authorised vehicles only

 100 metre contour interval

 Bunyip State Park

 Other park/reserve

 State Forest