

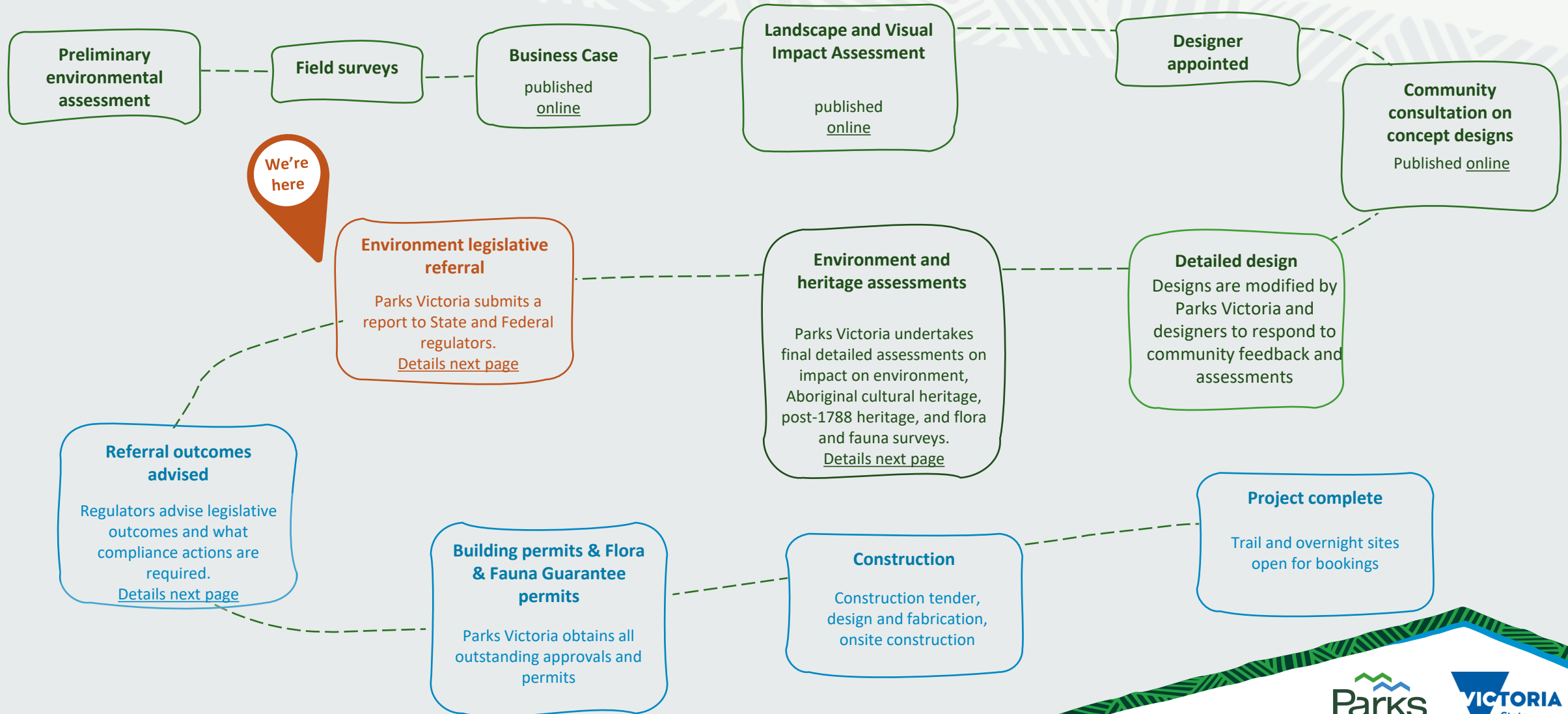
Falls to Hotham Alpine Crossing

What we've done and where we're going

complete

underway

upcoming



Falls to Hotham Alpine Crossing

Details about referrals and assessments

Preliminary environmental assessments

Parks Victoria has undertaken

- Preliminary Environmental Assessment
- Field surveys (flora, fauna and geotechnical)
- Landscape and Visual Impact Assessment

Detailed environment and heritage assessments

Parks Victoria has finalised additional detailed assessments on: environment, Aboriginal cultural heritage, post-1788 heritage, and flora and fauna surveys.

Including:

- Targeted flora and fauna surveys
- Historical Heritage Assessment survey
- Cultural Heritage Management Plan

Environmental legislative referral

Parks Victoria has compiled findings into a report for regulators based on the studies undertaken. The project will need to comply with the following legislation:

- [Environmental Effects Act 1978](#)
- [Environment Protection and Biodiversity Conservation Act 1999](#)
- Cultural Heritage Management Plan (CHMP) according to the [Aboriginal Heritage Act 2006](#)
- Native Title assessment according to [Native Title Act 1993](#)
- Assessment against the [Flora and Fauna Guarantee Act 1988](#)
- Approval from relevant water authority according to the [Catchment and Land Protection Act 1994](#)
- Evidence that Parks Victoria have [minimised the removal of or impact on native vegetation](#) according to [Planning and Environment Act 1987](#)
- Assessment and approval under the [Heritage Act 2017](#)

Environmental legislation outcomes advised

Regulators advise legislative outcomes and what compliance actions are required. Parks Victoria will implement any and all compliance actions as directed by regulators.