



## *6.0 Township and Precinct Plans*

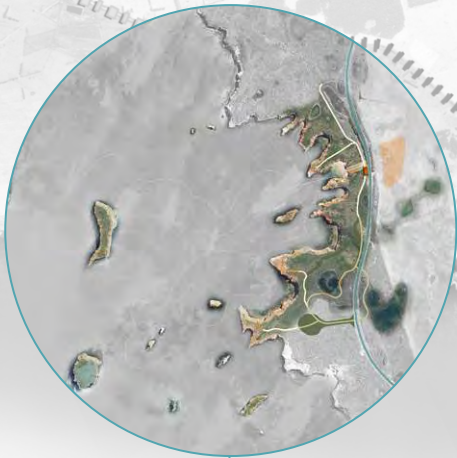


6.0 Township and Precinct Plans

*“An idyllic family playground where gentle waters from open fields wet the toes of Peterborough before greeting an ocean full of shipwreck history.”*

Peterborough is the coast’s western hub. To improve Peterborough’s connections to the parks, a “Park and Ride Hub” with a Visitor Experience Centre is proposed east of the Curdies River Bridge to coordinate the parking, transport and access to the parks and local airfield.

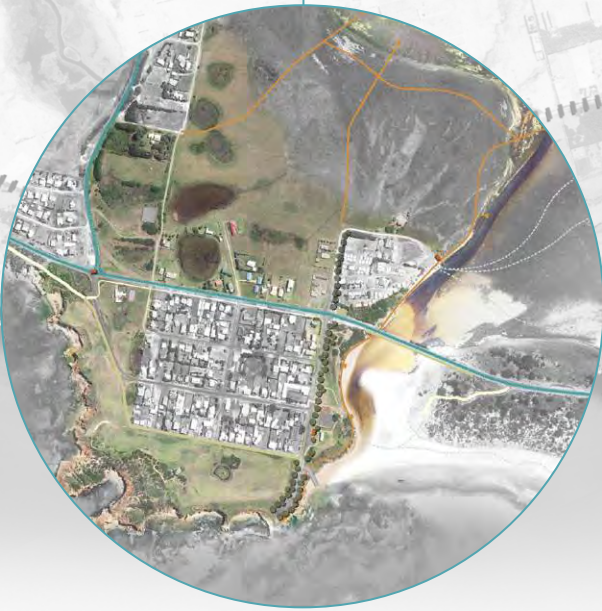
PETERBOROUGH  
PARK INTERFACE PLAN



BAY OF ISLANDS  
PRECINCT PLAN

*“The bay is protected from the elements of time by imposing island stacks.”*

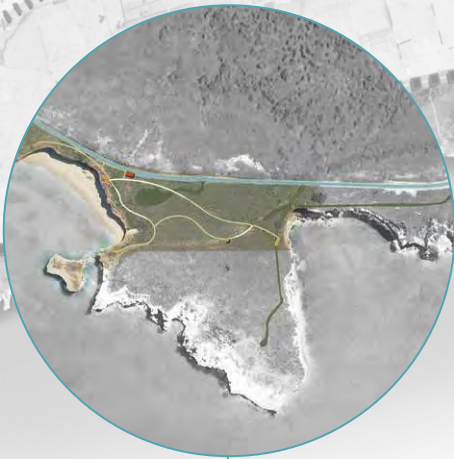
New lookouts, landings, steps, viewing hides, boardwalks and visitor information will guide people through a network of trails. From a visitor pod, the trails link to wetlands, sink holes and profoundly beautiful views of the Bay of Islands.



LONDON BRIDGE  
PRECINCT PLAN

*“A bridge becomes an arch and then an island when its connection to land succumbs to nature’s elements.”*

From a visitor pod located adjacent to the Great Ocean Road, a loop trail links new lookouts and boardwalks that draw visitors across the headland and provide views to the beach, its penguin colony and fragile escarpment.





**PORT CAMPBELL  
PARK INTERFACE PLAN**

*“Towering headlands guard Port Campbell’s harbour – the historic heart of the Shipwreck Coast.”*

Key initiatives to reinforce Port Campbell’s role as “heart of the parks” include a new “town green”, Visitor Experience Centre, trail links and a pedestrian bridge over Campbells Creek for a stronger connection between the township and the parks. Local walks are proposed to integrate with the 12 Apostles Trail, the coastal hinterland touring route and the Great Ocean Road “Parkway” to create a network of experiences around Port Campbell.

**PRINCETOWN  
PARK INTERFACE PLAN**

*“Princetown, the doorway to the Shipwreck Coast, where gentle rolling hills and meandering waters meet roaring ocean.”*

Princetown is the coast’s eastern hub. The town’s proximity to the 12 Apostles Trail, the Great Ocean Walk and Gellibrand River create an eco-adventure destination. The Gellibrand River boardwalk is proposed to connect to a “trail head” that provides walkers and riders a direct connection to services, accommodation and a range of local activities.

**LOCH ARD  
PRECINCT PLAN**

*“At your own pace, drift through a world of coastal heath and soak in stories of the sea from another time.”*

A visitor pod at the intersection of the Great Ocean Road and Plantation Drive is the proposed starting point for the exploration of new trails, viewing decks, lookouts and beach stairs that take people through a journey around Loch Ard Gorge, its cemetery, the Blowhole, coastal headlands and rock stacks. The Sherbrook River and the Pines complement the coastal experience with potential for tourism investment in eco-adventure activities and accommodation accessible by walking and cycling.

**TWELVE APOSTLES  
GLENAMPLE  
PRECINCT PLAN**

*“Hidden just behind one of the world’s great wonders sits a humble farmhouse at the centre of one of Victoria’s great survival stories.”*

The Twelve Apostles Glenample Precinct draws together the Twelve Apostles, Gibson Steps and Glenample Homestead as a destination. Attractions include new short walks, sheltered views of the Twelve Apostles, 50-metre high cliff stairs referencing local history and a regional providore, children’s farm and kitchen gardens showcasing local produce. People coordinate their visit from a Visitor Experience Centre with access to shuttle transport services from a park and ride hub. Here Traditional Owners will welcome visitors to Maar Territory, a cultural landscape that spans tens of thousands of years.



6.1 BAY OF ISLANDS PRECINCT PLAN

*“The bay is protected from the elements of time by imposing island stacks.”*

The Bay of Islands is a profoundly special place. With its sink holes, wetlands and cove of island rock stacks, it offers multiple experiences and views.

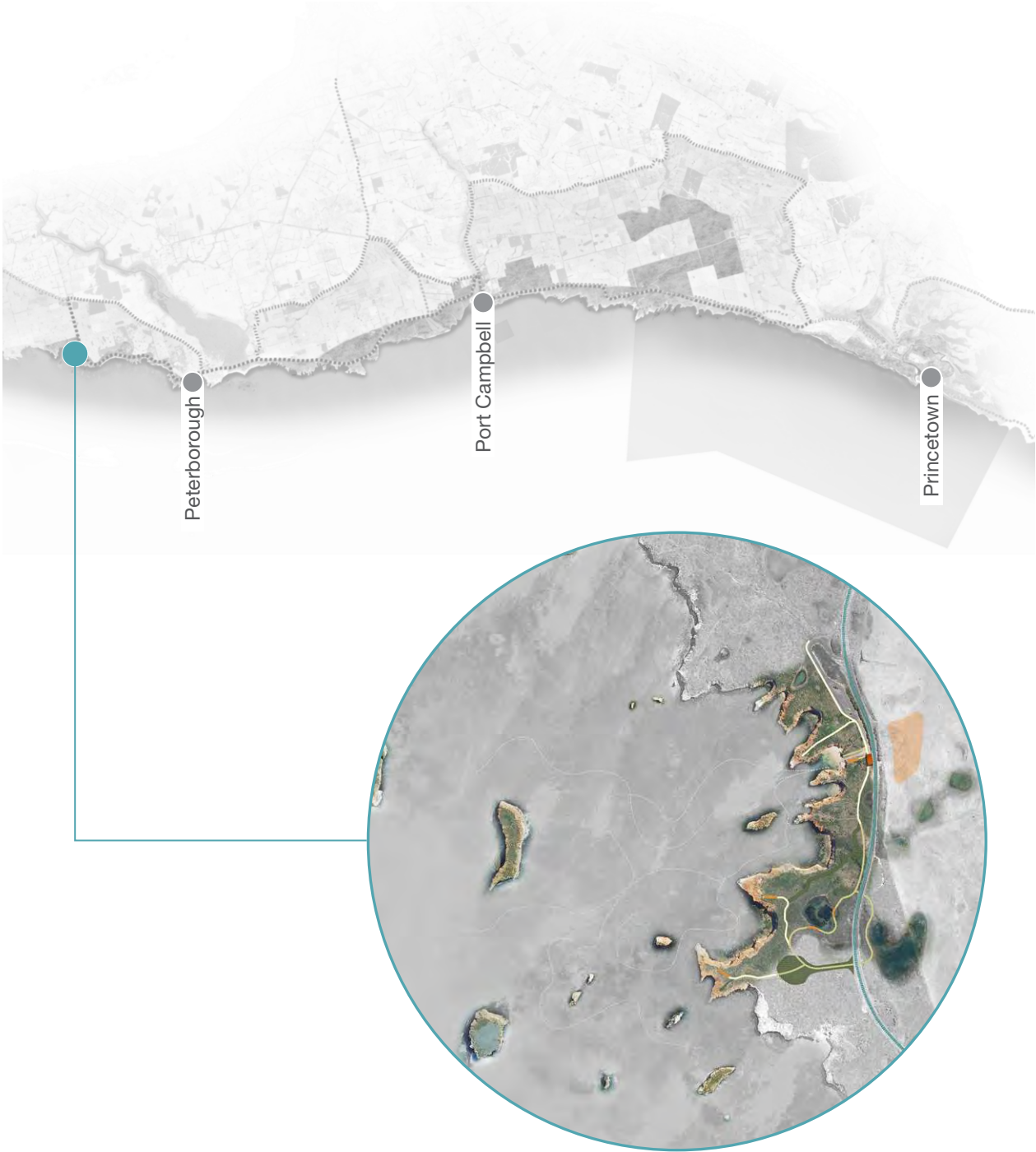
The precinct, five minutes by shuttle bus, fifteen minutes by bicycle or a one-hour walk from Peterborough, has a unique relationship with the township. A shuttle transport service, bicycle share scheme and a walking trail is proposed to link Peterborough and the Bay of Islands.

Trail upgrades, new lookouts, landings, steps, boardwalks and viewing hides are proposed to guide people through the different spots to explore. This network of linked trails is centred around a new visitor pod proposed on the edge of the Great Ocean Road.

The visitor pod is proposed to include a transport stop that combines bicycle share parking and a small bus shelter as well as interpretive and wayfinding signage, WiFi connectivity, showers and toilets. It also offers the opportunity for kayak rental, tours and a boating hub.

There is also a potential for development of small-scale eco-adventure type accommodation and a seasonal beach café kiosk. These could be located north of the Coastal Park on private land, if in time the land becomes available for this type of use.

Also shown is the potential for a key trail to be extended west of the Bay of Islands.



The Bay of Islands





Lookout shelters, Cap de Creus, Spain, photo by EMF Architects. A similar lookout could potentially be located at a headland to view the Bay of Islands



Bird hide by ALT – Thierry Lagrange, photo by ALT - Thierry Lagrange



Ablution Block, Cook Park by Fox Johnston, photo by Brett Boardman



Microcostas, Spain by Gualart Architects, photo by Vincente



Design idea for boardwalks and bird watching hides





Bay of Islands Precinct Plan

NOTE: Trail boardwalk and lookout alignments are shown as indicative only. Further detailed design, alignment and planning approvals, including a cultural heritage management plan and consultation with Traditional Owners, will be required prior to implementation. Setting parameters in the Experience + Wayfinding Strategy inform any development opportunities.





Site Program

		Marine Environs	+
		Coastal Park	+
		Coastal Hinterland	+
1	+	+	Boat Bay launching point
2		+	Boat Bay Visitor Pod
		+	– Parking and transport stop
			– Change facilities, beach showers, toilets
3		+	Beach access stairs and lookout
4		+	Lookout
5		+	Sink Hole to Stack Trail
6		+	Private sector tourism development opportunity
7	+	+	Lookout deck and interpretive signage
8	+	+	National Park local permit car park

Site Key

	Park boundary
	Existing walking track [retained]
	Proposed walking track
	Potential for a strategic trail going west of the Bay of Islands
	Great Ocean Road “Parkway”
	Boardwalks / viewing deck
	Proposed Visitor Pods
	– Transport stop / shelter
	– Bicycle Share Point
	– Park permit for boat parking
	– Interpretation and wayfinding
	– Beach shower and change rooms
	– Seasonal beach café
	Potential private sector tourism development opportunity - subject to land availability over time
	Revegetation of existing areas of infrastructure

Site Elements

ACCOMMODATION		Education / Seminar Centre
		Up-market Accommodation
	+	Eco-lodge
		Affordable Accommodation
		Self-contained Units
		Caravan / Motor Homes
		Hiker / Cycle Huts
EXPERIENCE	+	Camping / “Glamping”
	+	Visitor Pods / Interpretive & Information
		Museum / Gallery
	+	Food / Beverage
		Hospitality / Entertainment / Restaurant
	+	Lookouts & Hides
		Health / Wellbeing Recreation / Spa
ANCILLARY	+	Boating / Kayak & Canoe Facilities
	+	Guided Tours
		Helicopter Tours
	+	Seating / Decks / Boardwalks & Trails
	+	Shuttle Bus Service and Bicycle Share
		Parking - Tour buses, private vehicles
		Trail Head / Rest Shelters / Picnic Areas
	+	Toilet / Change / Beach Showers



A precedent for potential eco-lodges on adjacent farmland. Endemico Resguardo Silvestre, photo by Gracia Studio.



Kayaking the seas on a calm day, photo by Mark Cuthell



6.2 PETERBOROUGH TOWNSHIP INTERFACE PLAN

*“An idyllic family playground where gentle waters from open fields wet the toes of Peterborough before greeting an ocean full of shipwreck history.”*

Central to the proposal for Peterborough is the need to carry forward the tranquil ‘coastal village’ character of the township while providing opportunities to better service visitors travelling through the town to the Bay of Islands Precinct.

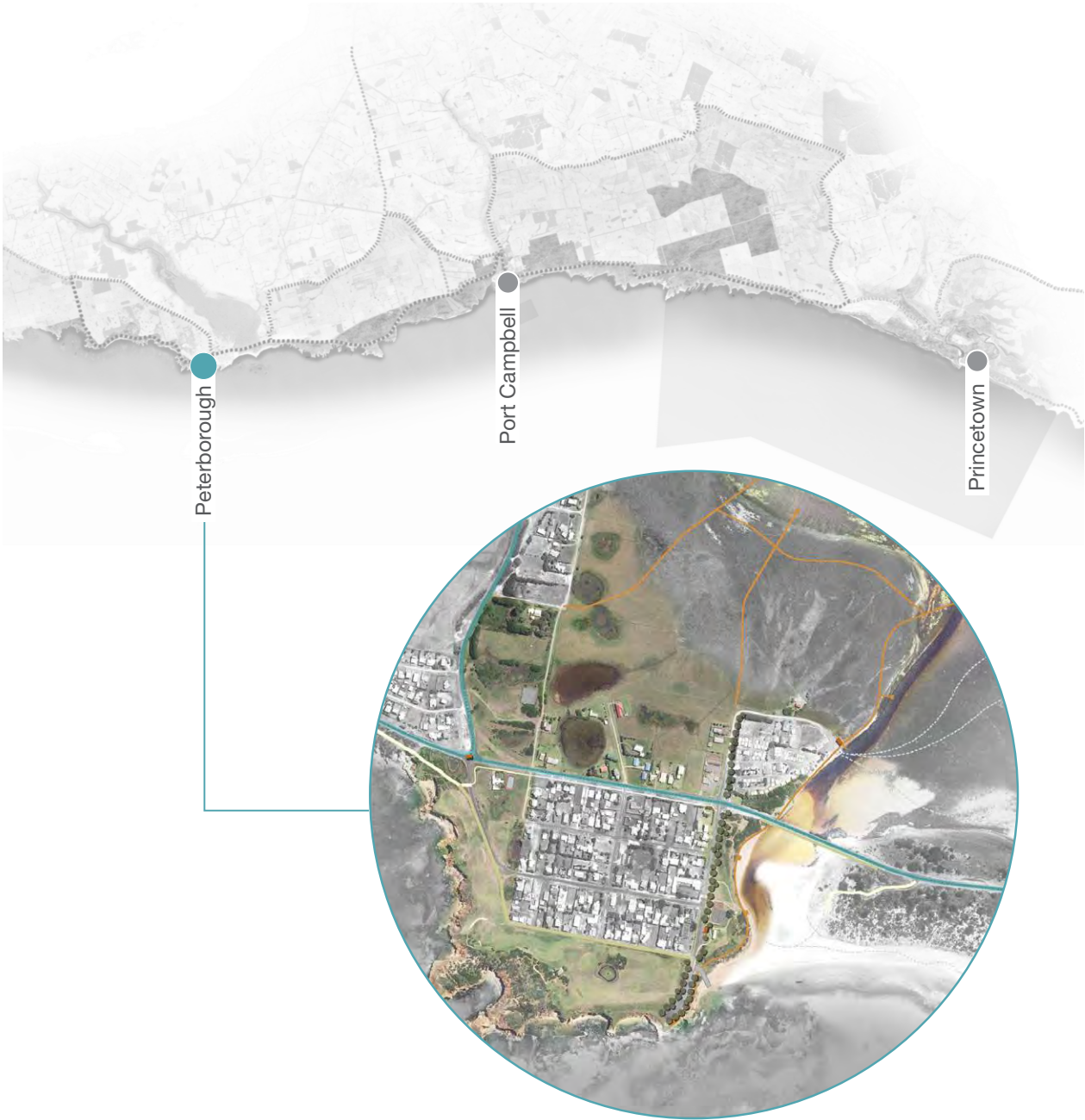
Peterborough’s relaxed nature and character has informed how the village might interface the Bay of Islands Coastal Park and allow residents and visitors alike to interact more closely with it’s neighbouring parks.

Wetland boardwalks over Curdies Inlet are proposed at Irvine Street’s northern end. This allows for loop walks within the town, platforms over Curdies Inlet for picnics, fishing and bird watching. New access to the ocean via an upgraded boat ramp and boardwalks are also included. A park and ride hub is proposed to the east of Curdies Inlet near the airstrip to mark the entry into the parks.

Irvine Road’s role as the township’s eastern edge can be further defined to mark where town and park meet. Irvine Road and Irvine Street combine to form a north-south link from the headland to Curdies Inlet and create a stronger connection between the town and its foreshore. Visually, this could be achieved with modest streetscape works and the inclusion of new street tree planting.

This edge could be further enhanced with the inclusion, over time, of small-scale accommodation offers and potentially a relaxed style local produce café/providore to the street’s western edge.

There is also an opportunity to improve the quality and functionality of the foreshore reserve and its connection to the river, and over time upgrade the pavilion, change facilities and toilets to provide improved amenity for visitors and locals alike.



Where the calm of Curdies Inlet meets the seas of Bass Strait





A place to picnic by the river, photo by Simon Wood



A framed view, boardwalk and shelter at G.A.S.P by Room11, photo by Ben Hosking



Boardwalk through wetlands, by McGregor Coxall, photo by Simon Wood



Kayaking platform, photo by Fred Hsu



Design idea for a boardwalk along Curdies Inlet and kayaking the calm waters





Site Key

- Park entry
- Park boundary
- Existing walking track [retained]
- Proposed walking track
- Great Ocean Road "Parkway"
- Boardwalks / viewing deck
- Proposed Visitor Pod
  - Transport stop / shelter
  - Bicycle Share Point
- Proposed planting

Site Program

- 1 + + Upgraded headland car park to reduce hardscape and include Water Sensitive Urban Design (WSUD). Durable lookout upgrade to withstand coastal conditions.
- 2 + + Curdies Inlet wetland boardwalk.
- 3 + + Boat launch, canoe and kayak.
- 4 + Bay of Islands Trail.
- 5 + Opportunity to create a stronger connection between the town and foreshore, with the potential for upgraded accessibility, services and facilities. Improve quality and function of foreshore reserve.
- 6 + + Upgraded boat ramp to Newfield Bay.
- 7 + + Peterborough Park + Ride hub.
- 8 + Peterborough air strip - light aircraft.
- 9 + Provide for pedestrian and bicycle lane on Curdies Bridge.

- Marine Environs +
- Coastal Park +
- Coastal Hinterland +





Peterborough Township Interface Plan



Site Elements

ACCOMMODATION		Education / Seminar Centre	EXPERIENCE	+	Visitor Pods / Interpretive & Information	ANCILLARY	+	Seating / Decks / Boardwalks & Trails
		Up-market Accommodation			Museum / Gallery		+	Shuttle Bus Service and Bicycle Share
		Eco-lodge			Food / Beverage		+	Parking - Tour buses, private vehicles
	+	Affordable Accommodation			Hospitality / Entertainment / Restaurant		+	Trail Head / Rest Shelters / Picnic Areas
		Self-contained Units		+	Lookouts & Hides		+	Toilet / Change / Beach Showers
	+	Caravan / Motor Homes			Health / Wellbeing Recreation / Spa			
		Hiker / Cycle Huts		+	Boating / Kayak & Canoe Facilities			
+		Camping			Guided Tours			
					Helicopter Tours			

NOTE: Trail boardwalk and lookout alignments shown are indicative only. Further detailed design, alignment and planning approvals, including a cultural heritage management plan and consultation with Traditional Owners, will be required prior to implementation. Setting parameters in the Experience + Wayfinding Strategy will inform any development opportunities.



6.3 LONDON BRIDGE PRECINCT PLAN

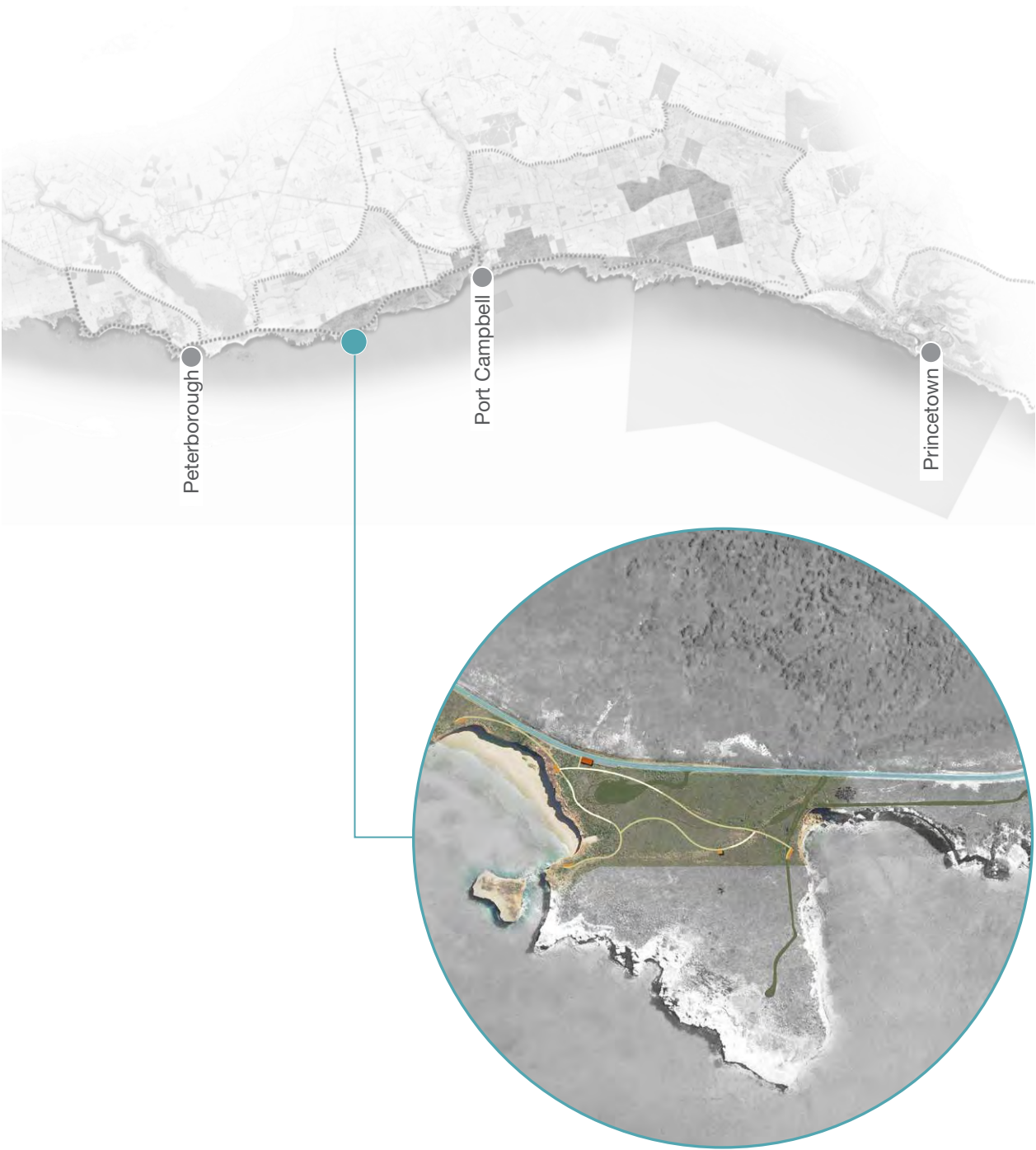
*“A bridge becomes an arch and then an island when its finite connection to land succumbs to nature’s elements.”*

London Bridge is an important destination located midway between Peterborough and Port Campbell. It presents several unique experiences ranging from viewing penguin rookeries, massive seas crashing through the once bridged arch, walks along hidden gullies and long distance views to The Arch and the Twelve Apostles.

Two new lookouts are proposed above the escarpment to replace the existing single structure and provide different viewing angles onto the beach and its penguin colony. A third lookout is proposed midway along the crescent-shaped escarpment to enable visitors to experience the power of waves compressed between the headland and its now outcropped rock stack. Access to the beach is not recommended due to the fragile nature of the penguin habitat.

A new loop trail links a lookout on the east of the headland, and focuses on the Arch and the Twelve Apostles and a slightly raised deck on the headland which provides a 360 degree view of the coast. The trail returns to the visitor pod via the headlands’ gully through patches of large trees, creating an intimate experience. The detailed design of this trail will take into account the sensitivity of the endangered EVC to protect it and enable people to learn and understand why it is special.

Cycling and walking access from Port Campbell and Peterborough to the London Bridge Precinct is proposed to be provided via the Great Ocean Road as a ‘parkway’. This trail network enters the site through a new visitor pod proposed on the edge of the Great Ocean Road that is envisaged to incorporate interpretive information services including opportunities for precinct tours.



The collapsed London Bridge





Penguin Interpretation, photo by Anne Noble



Keast Park, Victoria, Site Office, photo by John Gollings, Andrew North, Chris Sawyer



Viewing The Arch and the Twelve Apostles beyond



Little Penguin tracks at London Bridge



London Bridge – now an island





London Bridge Precinct Plan

NOTE: Trail boardwalk and lookout alignments are indicative only. Further detailed design, alignment and planning approvals, including a cultural heritage management plan and consultation with Traditional Owners, will be required prior to implementation. Setting parameters in the Experience + Wayfinding Strategy inform any development opportunities.





Site Program

- Marine Environs
- Coastal Park
- Coastal Hinterland

- 1

Visitor Pod with interpretation and wayfinding.  
Potential opportunity for temporary car parking adjacent to Great Ocean Road.
- 2

London Bridge deck and lookout
- 3

Penguin Rookery deck and lookout  
- afternoon and evening views
- 4

Waterfall and Gully deck and lookout  
- morning views
- 5

Headland Lookout deck and orientation point  
- 360 design view
- 6

The Arch to Apostle lookout deck
- 7

Gully Walk

Site Key

- Park boundary
- Existing walking track [retained]
- Proposed walking track
- Great Ocean Road “Parkway”
- Boardwalks / Viewing deck
- Proposed Visitor Pods

– Transport stop / Shelter

– Interpretation
- Revegetation of existing areas of infrastructure

Site Elements

- ACCOMMODATION
- Education / Seminar Centre
- Up-market Accommodation
- Eco-lodge
- Affordable Accommodation
- Self-contained Units
- Caravan / Motor Homes
- Hiker / Cycle Huts
- Camping / “Glamping”
- EXPERIENCE
- Visitor Pods / Interpretive & Information
- Museum / Gallery
- Kiosk
- Hospitality / Entertainment / Restaurant
- Lookouts & Hides
- Health / Well Being Recreation / Spa
- Boating / Kayak & Canoe Facilities
- Guided Tours
- Helicopter Tours
- ANCILLARY
- Seating / Decks / Boardwalks & Trails
- Shuttle Bus Service and Bicycle Share
- Parking - Tour buses, private vehicles
- Trail Head / Rest Shelters / Picnic Areas
- Toilet



Norwegian Wild Reindeer Center Pavilion Snøhetta, photo by diephotodesigner.de



Esterwegen Memorial by WES Landscape Architecture, photo by Stefan Schoening



6.4 PORT CAMPBELL TOWNSHIP INTERFACE PLAN

“*Towering headlands guard Port Campbell’s Harbour – the historic heart of the Shipwreck Coast*”

Port Campbell’s role as the “heart” of the Shipwreck Coast can be reinforced through a range of master planning initiatives that improve its connections with the national park. The town’s public domain is proposed to function as the ‘trail head’ to the trails east and west the village. The establishment of a pedestrian focused ‘town green’ at Lord Street’s southern end is proposed due to its location between the beach, the foreshore, the Lord Street shops, Port Campbell’s headland and the intersection of national park trails and port activities.

A new proposed pedestrian bridge over Campbells Creek can link the town with the trails to the west. The new bridge and local town loop walks can provide access to Two Mile Bay, the Rifle Range area and be integrated with the 12 Apostles Trail. This in turn can enable pedestrians using the 12 Apostles Trail from Timboon direct access into Port Campbell. An opportunity exists for further private sector tourism investment near the Rifle Range or Two Mile Bay that could link to the C30 site further north that is zoned to facilitate visitor accommodation or an integrated resort. Corangamite Shire is undertaking a pre-feasibility investigation of the Rifle Ranges site to assess future opportunity for a private sector tourism investment.

The town green presents a unique opportunity in Port Campbell to achieve a sun-filled space largely protected from the prevailing winds with opportunities for seating, shade and beach edge views coupled with a retail edge. This initiative benefits the town in several ways including the increased provision of centrally located high quality open space with active edges. The green can accommodate a range of activities spanning from passive recreation through to being able to hold small events, markets and festivals. Other key initiatives proposed in the master plan include:

- Relocation of Parks Victoria’s administration function to their Port Campbell depot site as an integrated administration and operations centre;
- Redevelopment and location of the Visitor Experience Centre more prominently as part of a park and ride hub to address the Lord Street / Great Ocean Road intersection;
- Creation of new walks around the township including reinstatement of trails around Campbells Creek; and
- Creation of a pedestrian-friendly main street framed by new street tree planting that visually orientate people from the park and ride hub to the town green.



Port Campbell, its creek and harbour





Boardwalk through the wetlands, photo by AECOM



Eco-huts, photo from australia.com



Cycle and pedestrian bridge, photo by Jaap Oepkes



Areas to sit and view the harbour, photo by Relae Design



A terraced foreshore and town green providing a new relationship between town and water





## Site Key

-  Park Entry
-  Park Boundary
-  Existing walking track [retained]
-  Proposed walking track
-  Great Ocean Road “Parkway”
-  Potential private sector tourism development opportunity
-  12 Apostles Trail (Crater to Coast Trail)
-  12 Apostles Trail - optional alignment
-  Visitor Experience Centre
  - Transport Stop / Shelter
  - Bicycle Share Point
  - Park Permit for boat parking
  - Interpretation and Wayfinding
-  Car Park
-  Proposed Planting

## Site Program

- |   |   |   |    |   |   |   |
|---|---|---|----|---|---|---|
| 1 | + | 12 Apostles Trail   |    |   | Marine Environs   | + |
| 2 | + | Town Green and Trail Head   |    |   | National Park   | + |
|   |   | <ul style="list-style-type: none"> <li>- Picnic, seating, paths, shade, shelter and wind protection.</li> <li>- Beach shower and change rooms.</li> <li>- Bicycle Share Point</li> <li>- Interpretation and Wayfinding</li> </ul> |    |   | Coastal Hinterland  | + |
| 3 |   | Private Sector Tourism Development Opportunity  |    |   |   |   |
| 4 | + | Campbells Creek Pedestrian Bridge   |    |   |   |   |
| 5 | + | Campbells Creek Wetland Boardwalk   |    |   |   |   |
| 6 | + | Lord Street [pedestrian and bicycle friendly]   |    |   |   |   |
| 7 | + | Option for new, more prominent Visitor Experience Centre  |    |   |   |   |
|   |   |   | 8  | + | Port Campbell Park + Ride Hub   |   |
|   |   |   | 9  | + | Parks Victoria Operations, Maintenance and Administration Centre (on current Parks Victoria Depot site) |   |
|   |   |   | 10 | + | 12 Apostles Trail / Great Ocean Road Heritage Walk incorporates Great Ocean Road                        |   |
|   |   |   | 11 | + | Lookout / telecommunications for local WiFi   |   |
|   |   |   | 12 | + | Port Campbell Town Loop   |   |





Site Elements

Port Campbell Township Interface Plan



- ACCOMMODATION**
- + Education / Seminar Centre
  - + Up-market Accommodation
  - + Eco-lodge
  - + Affordable Accommodation
  - + Self-contained Units
  - + Caravan / Motor Homes
  - + Hiker / Cycle Huts
  - + Camping / "Glamping"

- EXPERIENCE**
- + Visitor Pods / Interpretive & Information
  - + Museum / Gallery
  - + Food / Beverage
  - + Hospitality / Entertainment / Restaurant
  - + Lookouts & Hides
  - + Health / Wellbeing Recreation / Spa
  - + Boating / Kayak & Canoe Facilities
  - + Guided Tours
  - + Helicopter Tours

- ANCILLARY**
- + Seating / Decks / Boardwalks & Trails
  - + Shuttle Bus Service and Bicycle Share
  - + Parking - Tour buses, private vehicles
  - + Trail Head / Rest Shelters / Picnic Areas
  - + Toilet / Change / Beach Showers

NOTE: Trail boardwalk and lookout alignments shown are indicative only. Further detailed design, alignment and planning approvals, including a cultural heritage management plan and consultation with Traditional Owners, will be required prior to implementation. Setting parameters in the Experience + Wayfinding Strategy will inform any development opportunities.



6.5 LOCH ARD PRECINCT PLAN

*“At your own pace, drift through a world of coastal heath and soak in stories of the sea from another time.”*

The Loch Ard Precinct comprises a collection of very special places within the Port Campbell National Park. They include the Loch Ard Gorge itself, its cemetery, the Blowhole, the proximity of the coastal headlands and rock stacks, the Sherbrook River, the Pines area and the numerous walks that link these sites together to tell the Loch Ard Story.

Mutton Bird Island is an important resting place for the Short-Tailed Shearwater (Muttonbird) which migrate 30,000 km every year. In the evenings, between October and April, they arrive in huge numbers – a spectacular natural attraction.

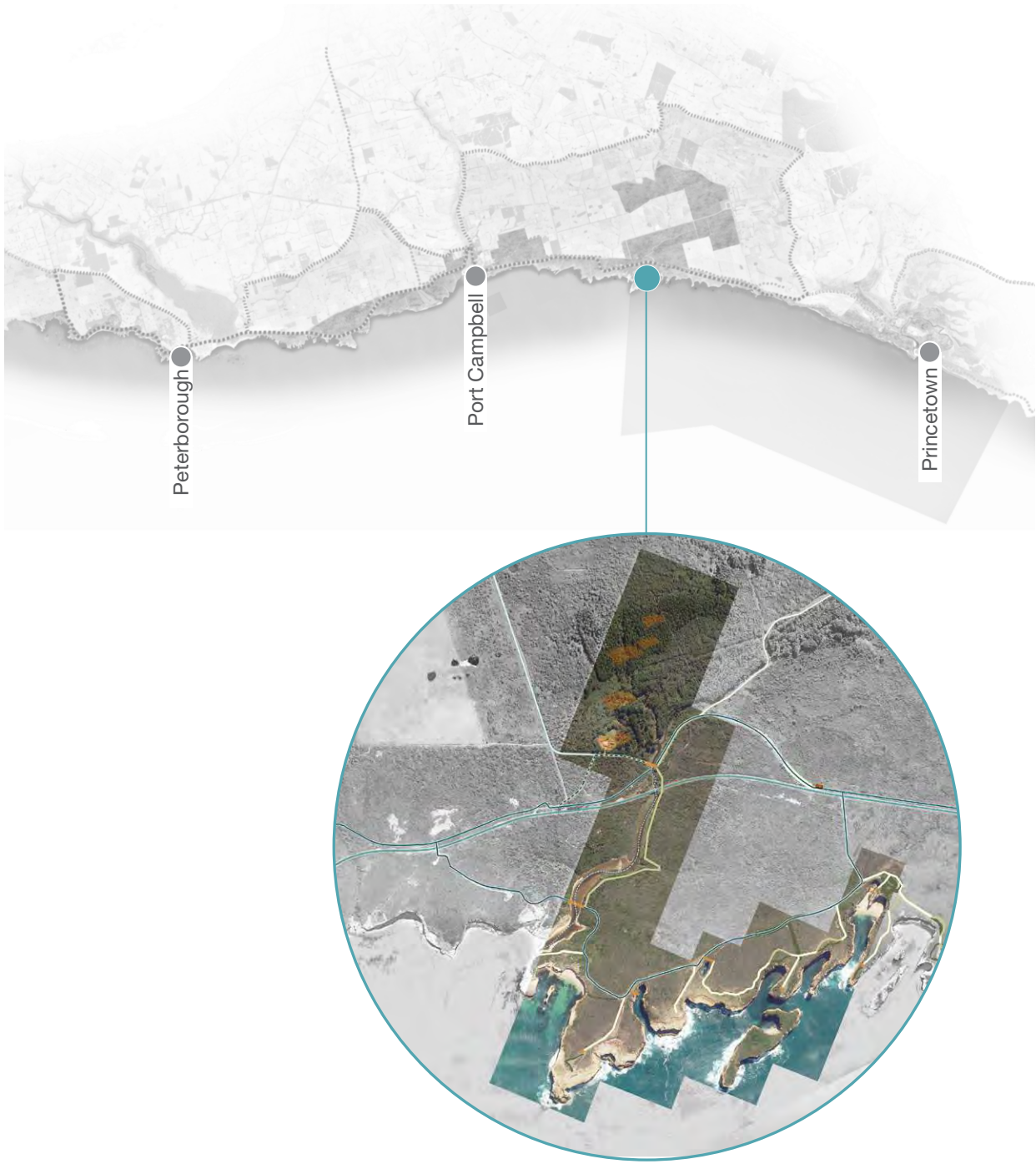
The 12 Apostles Trail, new lookouts, pedestrian and bicycle bridges over the Sherbrook River and universal access are proposed to draw the collection of existing visitor sites together into one cohesive experience.

New trails, lookouts, access steps and pedestrian and bicycle bridges over the Sherbrook River are proposed to draw the collection of visitor sites together into one cohesive experience that celebrates the precinct’s natural and cultural values and links them to the regional 12 Apostles Trail. The precinct can be visited by foot or bicycle.

A visitor pod is proposed at the intersection of the Great Ocean Road and Plantation Drive to enable the co-location of car parking on disturbed areas of the national park and to enable the existing carpark above the gorge to be decommissioned in response to ongoing coastal erosion and geological issues.

The proposed new carpark location is nominally 350m further north. Access to the precinct will follow Parks Victoria’s accessibility manual to ensure that a hierarchy of different needs are met to assist visitors with special needs. This may include the integration of the shuttle services into the precinct and/or a specific shuttle link.

The pod would include a transport stop that combines bicycle share parking and a small bus shelter as well as interpretative and wayfinding information, WiFi connectivity and toilets. An opportunity exists to redevelop the Girl Guides Lodge, complementing new camping in The Pines area, to establish an integrated eco-adventure accommodation and recreation base for visitors.



The famous Loch Ard Gorge





Havøysund Tourist Route, Norway by Reiulf Ramstad Architects, photo by Reiulf Ramstad Architects



New lookout at the Loch Ard blow hole – a walkway which will become a bridge over time



Rest Stop, Norway by LJB Architects, photo by L J B AS, E. Marchesi, Statens Vegvesen

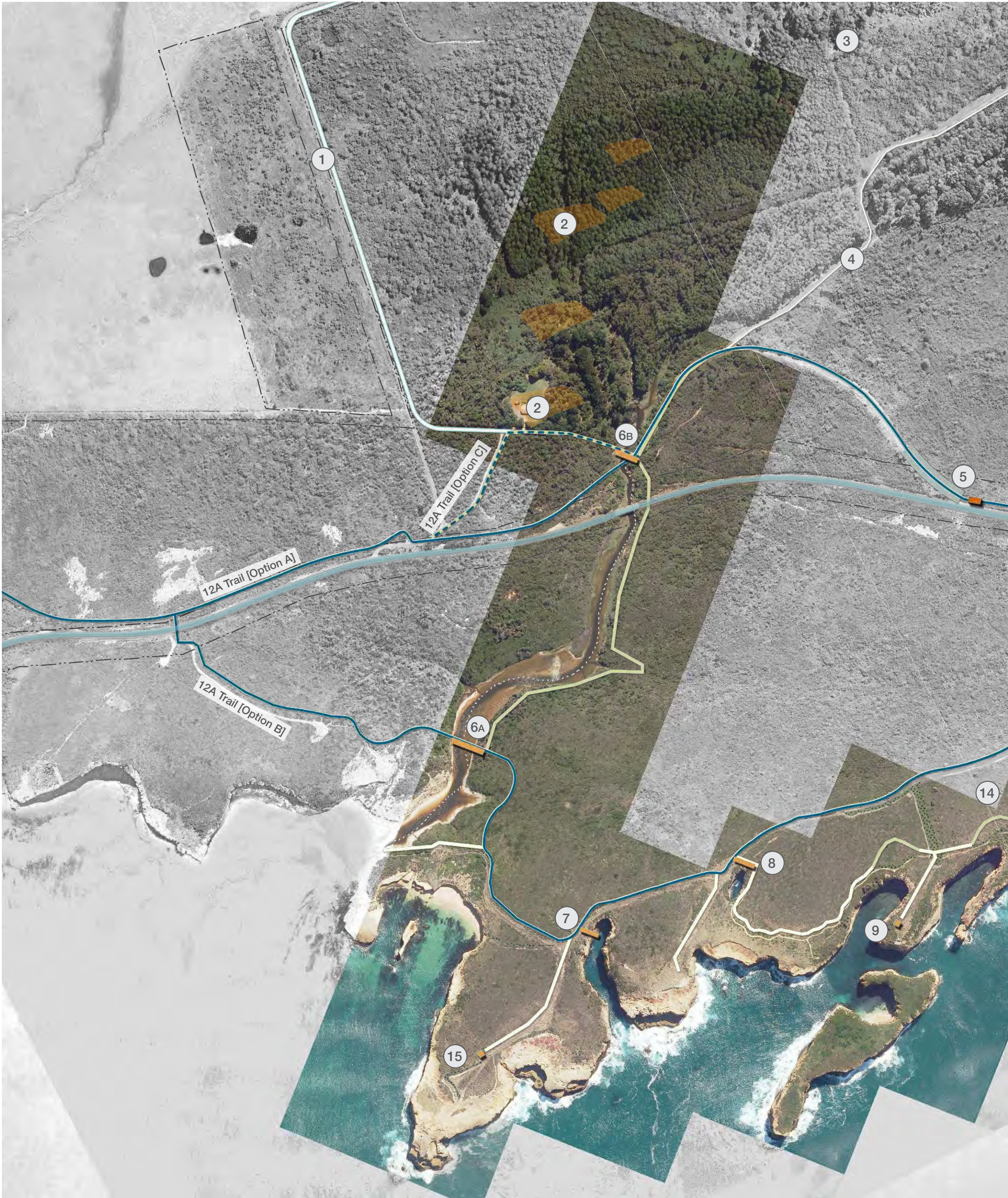


Glamping in Korea, ArchiWorkshop, photo by Lim June Young



Conceptual vision for new access to Loch Ard beach





Loch Ard Precinct Plan

NOTE: Trail boardwalk and lookout alignments are shown as indicative only. Further detailed design and planning approvals, alignment, including a cultural heritage management plan and consultation with Traditional Owners, will be required prior to implementation. Setting parameters in the Experience + Wayfinding Strategy inform any development opportunities.





Site Key

- Park boundary
- Existing walking track [retained]
- Proposed walking track
- Great Ocean Road “Parkway”
- Boardwalks / viewing deck
- Potential private sector tourism development opportunity
- 12 Apostles Trail
- 12 Apostles Trail - optional alignment
- Visitor Experience Centre
  - Transport Stop / Shelter
  - Bicycle Share Point
  - Interpretation and Wayfinding
- Car Park
- Possible revegetation of decommissioned infrastructure

Site Elements

- ACCOMMODATION
- Education / Seminar Centre
  - Up-market Accommodation
  - Eco-lodge
  - Affordable Accommodation
  - Self-contained Units
  - Caravan / Motor Homes
  - Hiker / Cycle Huts
  - Camping / “Glamping”
- EXPERIENCE
- Visitor Pods / Interpretive & Information
  - Museum / Gallery
  - Food / Beverage
  - Hospitality / Entertainment / Restaurant
  - Lookouts & Hides
  - Health / Wellbeing Recreation / Spa
  - Boating / Kayak & Canoe Facilities
  - Guided Tours
  - Helicopter Tours
- ANCILLARY
- Seating / Decks / Boardwalks & Trails
  - Shuttle Bus Service and Bicycle Share
  - Parking - Tour buses, private vehicles
  - Trail Head / Rest Shelters / Picnic Areas
  - Toilet

Site Program

- Marine Environs
- National Park
- Coastal Hinterland

- 1 Pines Local Access Road
- 2 Private Sector Tourism Development Opportunity
  - Pines Lodge to comprise multiple activities and accommodate people at different price points
- 3 Pines Mountain Biking Trails
- 4 The Ridge Adventure Run and Bike Trail
- 5 Proposed Visitor Pod
  - Transport, bicycle share point, shelter and kiosk / cafe, interim parking located on Plantation Drive
- 6A Sherbrook Bridge [12 Apostles Trail]
- 6B Sherbrook River pedestrian access bridge
- 7 Thunder Cave Lookout
- 8 The Blow Hole Lookout
- 9 Muttonbird Island Walk
- 10 Loch Ard Lookout Viewing Deck
- 11 Beach Access Stairs
- 12 Revegetation of decommissioned car park
- 13 Tom and Eva’s Trail to Glenample [12 Apostles Trail]
- 14 Loch Ard Cemetery
- 15 Broken Head Lookout
- 16 Razorback Lookout



Tree hut immersed in the pine forest, photo by Joel Allen



Videster Lookout, Norway, photo from Norway National Tourist Route



6.6 TWELVE APOSTLES GLENAMPLE PRECINCT PLAN

*“Hidden just behind one of the world’s great wonders sits a humble farmhouse at the centre of one of Victoria’s great survival stories”*

This precinct combines three of the Shipwreck Coast’s key attractions – the Twelve Apostles, Gibson’s Steps and the Glenample Homestead. It is proposed to maintain its role as the coast’s main visitor destination. A multi-layered experience is proposed where people can enter the national park through a new Visitor Experience Centre (VEC) and access the various sites and attractions, close by or throughout the park, via the precinct’s park and ride hub and shuttle service.

This orientation point enables different visitors to tailor their time to suit their interests, needs and budget. Day visitors to the Shipwreck Coast, and those as part of a Great Ocean Road tour, can disembark in one location and visit three or four sites without re-embarking the coach again before they depart the precinct. Alternatively, they may choose to re-embark in a different location having been led through the precinct by a tour operator, Aboriginal guide, or self-guided.

Visitors can choose to walk, ride or take a shuttle service that operates around the precinct or a combination of all three. Interpretation for specialist interest groups can be supported by guides and or via information apps on personal tablets, phones or preloaded devices from the VEC.

People who have arrived in the precinct from the 12 Apostles Trail or the Great Ocean Walk can access the parks via the shuttle service and be dropped off at their accommodation (with bikes) in one of the towns. Multi-day visitors can leave their campervans or cars at their campground or accommodation and access the precinct and parks via the shuttle. Multi-day visitors of the region can be dropped off at the precinct to enjoy a guided tour and then make their way (guided or independently) to their accommodation while their luggage is transferred in the tour bus.



Redesigned Twelve Apostles lookout and amphitheatre





The existing Gibson Steps



Cut staircase near The Arch



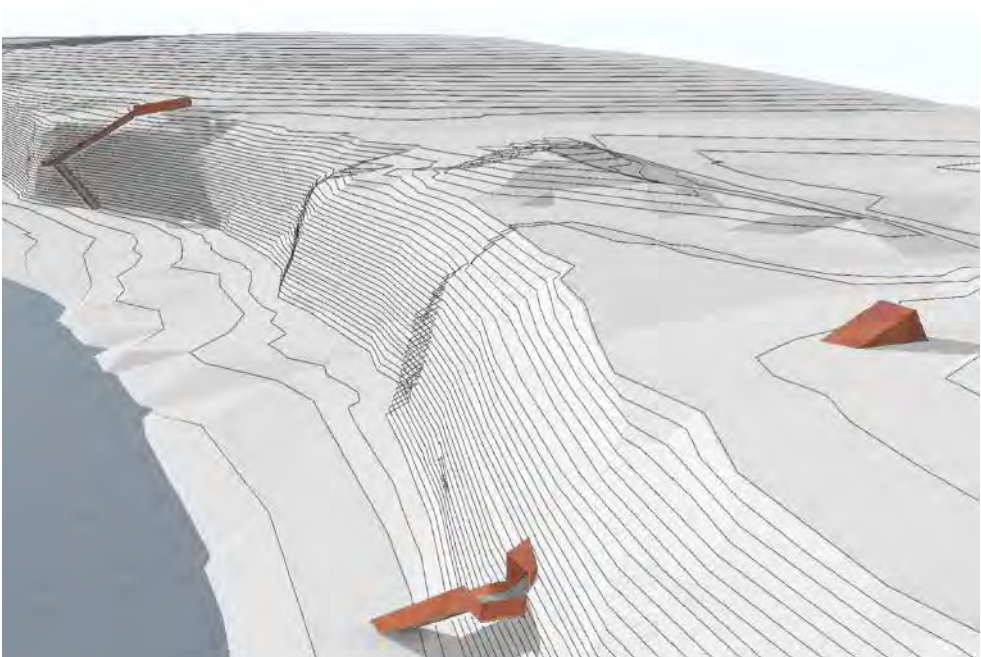
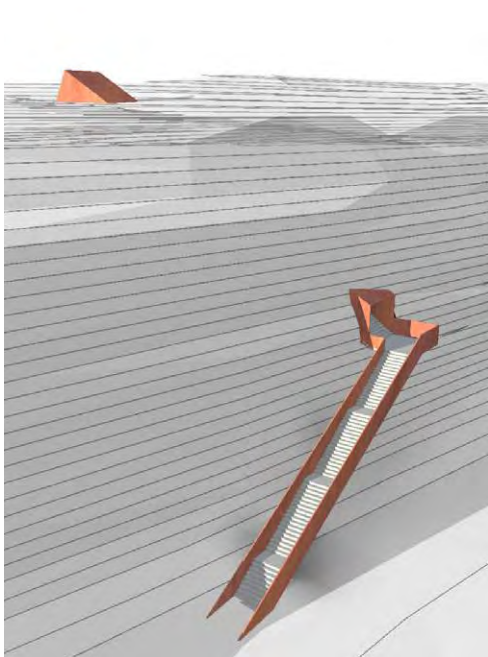
Cut staircase descending to the ocean at London Bridge



Trollstigplataet Lookout, Norway by Reiulf Ramstad Architects



New staircase concept studies



Concept – new staircase loop route along the beach at Gibsons Steps



Conceptual vision: View West from potential new Twelve Apostles lookout



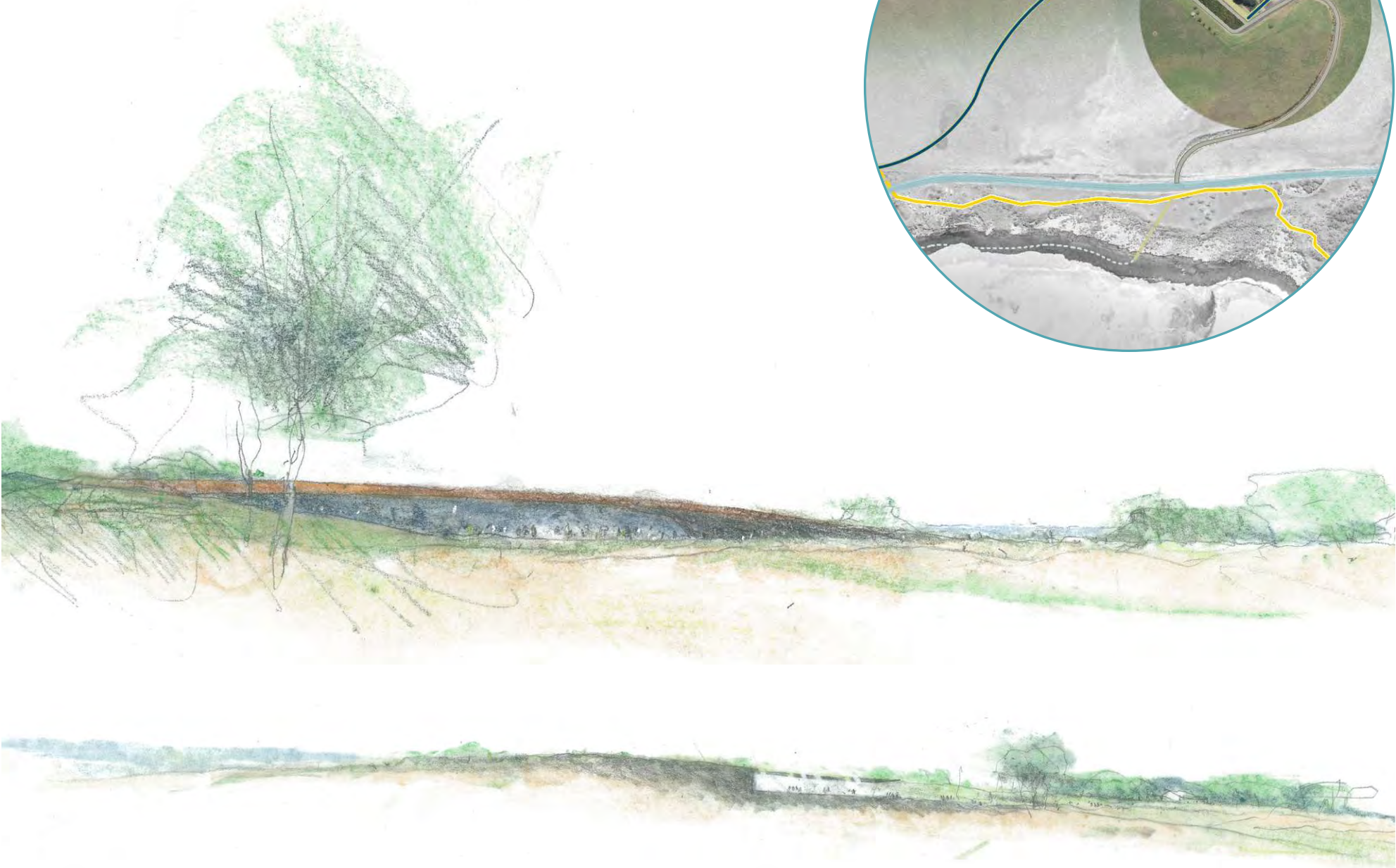
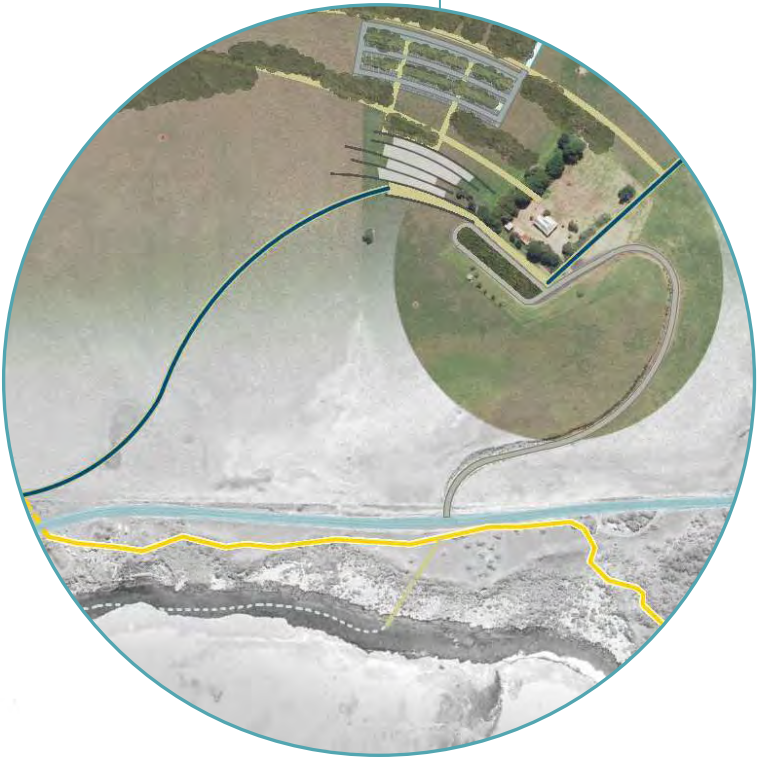
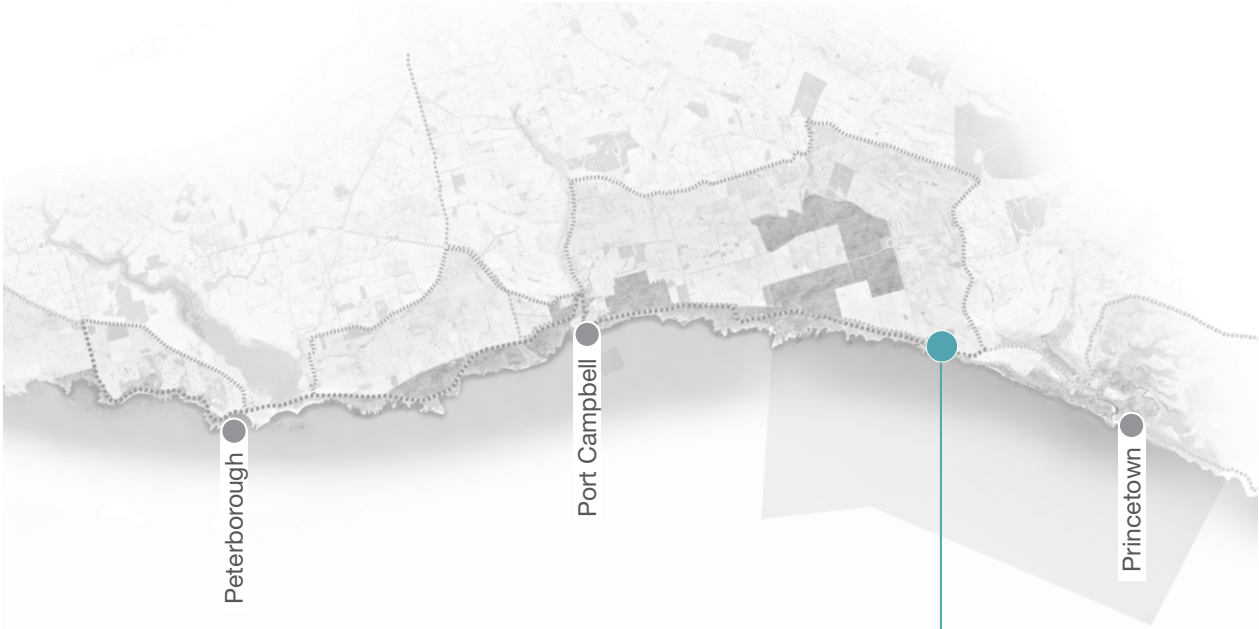
Glenample Homestead and Visitor Experience Centre

The Glenample Homestead is proposed as a providore style café and larder where regional produce can be tasted and purchased. The area around the historic homestead and farm is proposed to comprise a children’s farm and kitchen gardens that combine with the providore to provide a taste of the regional experience, even if only visiting for 20 minutes.

The precinct, 5 minutes by shuttle bus, 15 minutes by bike or a one hour walk from Princetown, has a unique relationship with the township. A shuttle transport service, bicycle share scheme and a walking trail are proposed to link Princetown to the Twelve Apostles Glenample Precinct.

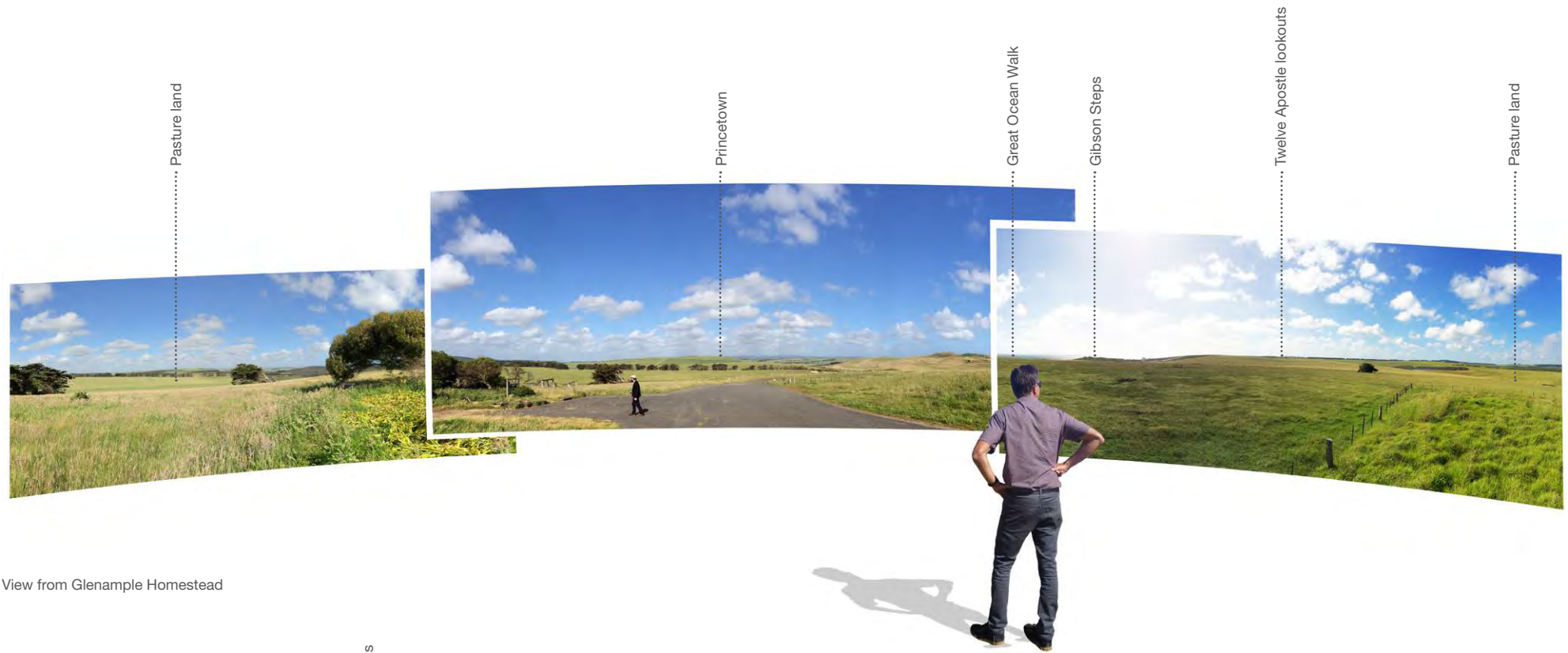
World-class upgrades to the existing visitor infrastructure (trails, lookouts, landings, steps, boardwalks and viewing hides) are proposed as a high priority to lift the quality of experience on offer, to rationalise access and movement, improve safety and reduce the extent of redundant signage and barrier fencing that clutter and interrupts views.

Improved access to the best views is created by new state-of-the-art facilities that include shelter for rainy or hot days. An iconic tunnel and beach stairs experience is proposed at Gibson Steps which can be use to control access to the beach during severe conditions for visitor safety. A network of world-class trails and visitor facilities integrate with the Great Ocean Walk and the 12 Apostles Trail to provide regional walking and bicycle connections east and west.

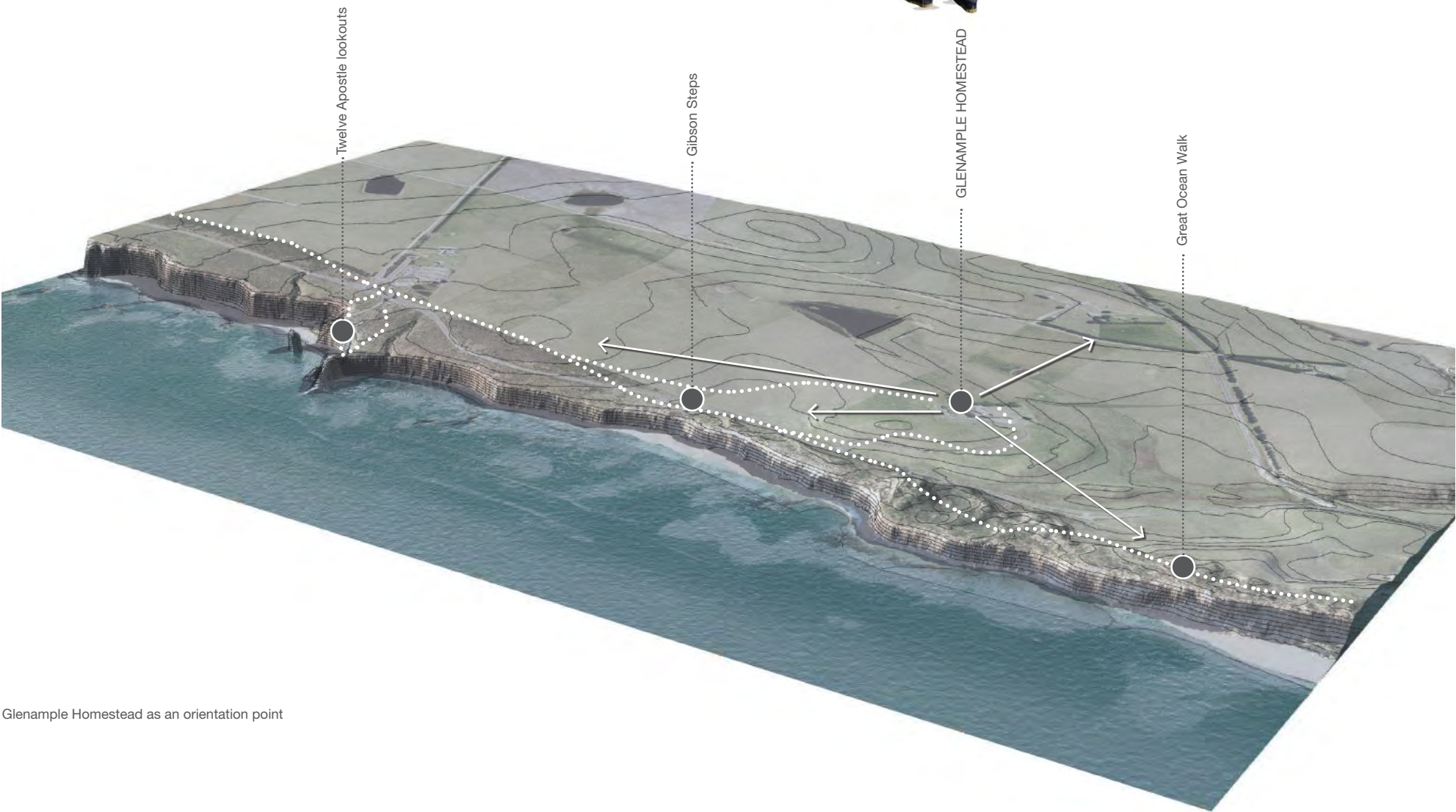


Glenample Visitor Experience Centre by Denton Corker Marshall





View from Glenample Homestead



Glenample Homestead as an orientation point

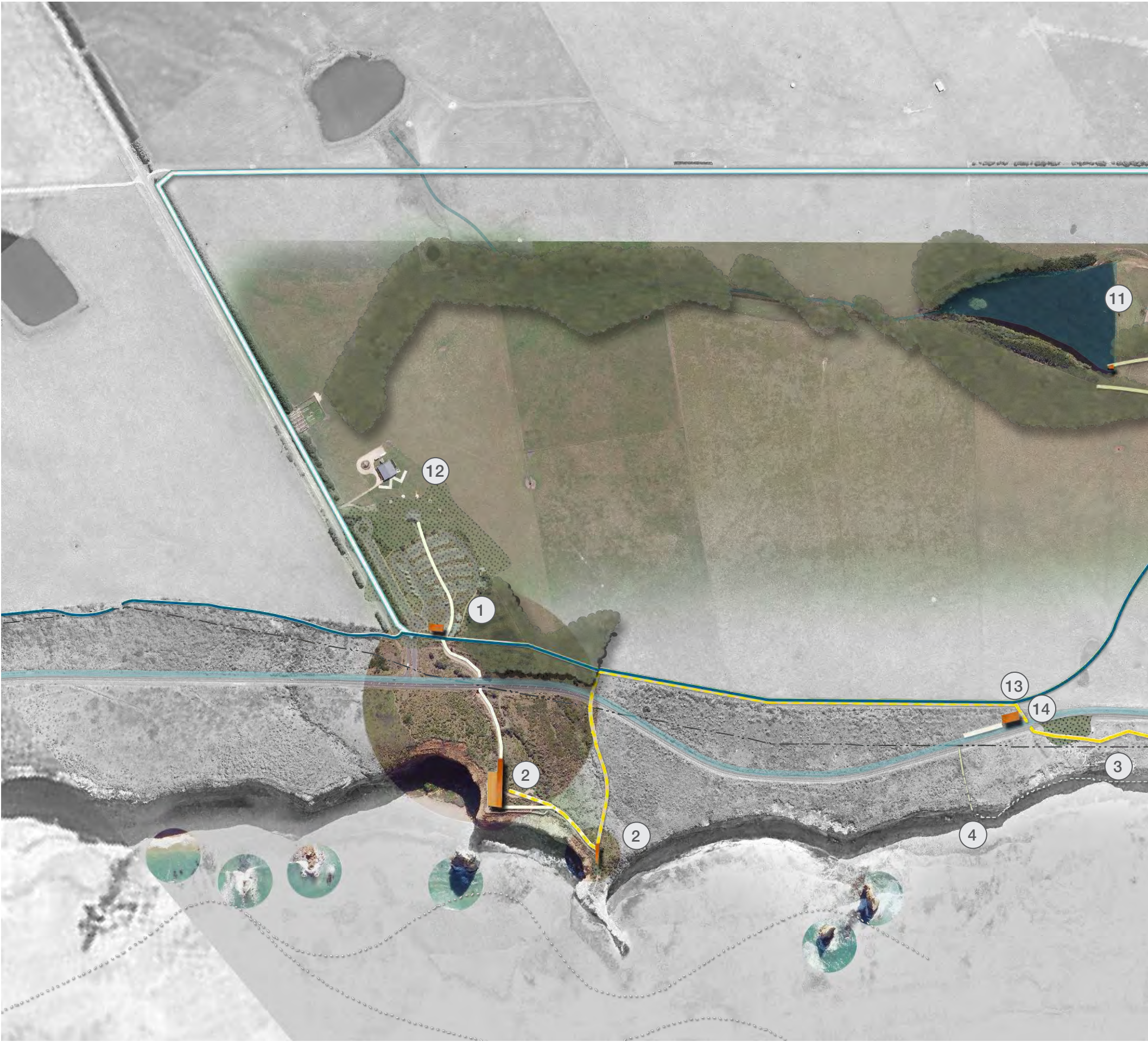


Stonehenge Visitor Centre by Denton Corker Marshall, photo by Denton Corker Marshall



Education programs and guided tours





Site Key

- Park Entry
- Park Boundary
- Existing walking track [retained]
- Proposed walking track
- Great Ocean Road "Parkway"
- Boardwalks / Viewing deck
- 12 Apostles Trail
- Great Ocean Walk
- Twelve Apostles service access
- Visitor Pod
- Car Park
- Revegetation of existing areas of infrastructure
- Proposed Planting
- Access from Port Campbell to the Twelve Apostles Marine National Park

Site Program

- 1 Twelve Apostles Visitor Pod
  - Transport, bicycle share point and shelter
- 2 Twelve Apostles all-weather amphitheatre and viewing decks
- 3 Gibson Steps
- 4 Gibson Steps Beach Walk & access stairs
- 5 Great Ocean Walk
- 6 Park Entry and Glenample Park + Ride Hub
  - Parking
  - Shuttle Bus and Bicycle Share Stop
  - Visitor Experience Centre and Tour Services

- 7 Glenample Homestead
  - Providore and kitchen gardens
  - Children's Farm
- 8 Transport Stop
- 9 Princetown Trail Loop
- 10 Park Entry Access Road
- 11 'The Dam' Picnic Area
- 12 Twelve Apostles Helicopter Tours
- 13 Local permit car park
- 14 Gibson Steps Visitor Pod

- Marine Environs
- National Park
- Coastal Hinterland





Site Elements

ACCOMMODATION	+	Education / Seminar Centre	+	Visitor Pods / Interpretive & Information	+	Seating / Decks / Boardwalks & Trails
		Up-market Accommodation	+	Museum / Gallery	+	Shuttle Bus Service and Bicycle Share
		Eco-lodge	+	Food / Beverage	+	Parking - Tour buses, private vehicles
		Affordable Accommodation	+	Hospitality / Entertainment / Restaurant	+	Trail Head / Rest Shelters / Picnic Areas
		Self-Contained Units	+	Lookouts & Hides	+	Toilet / Change
		Caravan / Motor Homes		Health / Wellbeing Recreation / Spa		
		Hiker / Cycle Huts		Boating / Kayak & Canoe Facilities		
		Camping / "Glamping"	+	Guided Tours		
			+	Helicopter Tours		

NOTE: Trail boardwalk and lookout alignments shown are indicative only. Further detailed design, alignment and planning approvals, including a cultural heritage management plan and consultation with Traditional Owners, will be required prior to implementation. Setting parameters in the Experience + Wayfinding Strategy inform any development opportunities. Further design development and transport logistics to be prepared in consultation with bus operators and transport industry.



6.7 PRINCETOWN TOWNSHIP INTERFACE PLAN

*“Princetown, the doorway to the Shipwreck Coast, where gentle rolling hills and meandering waters meet the roaring ocean.”*

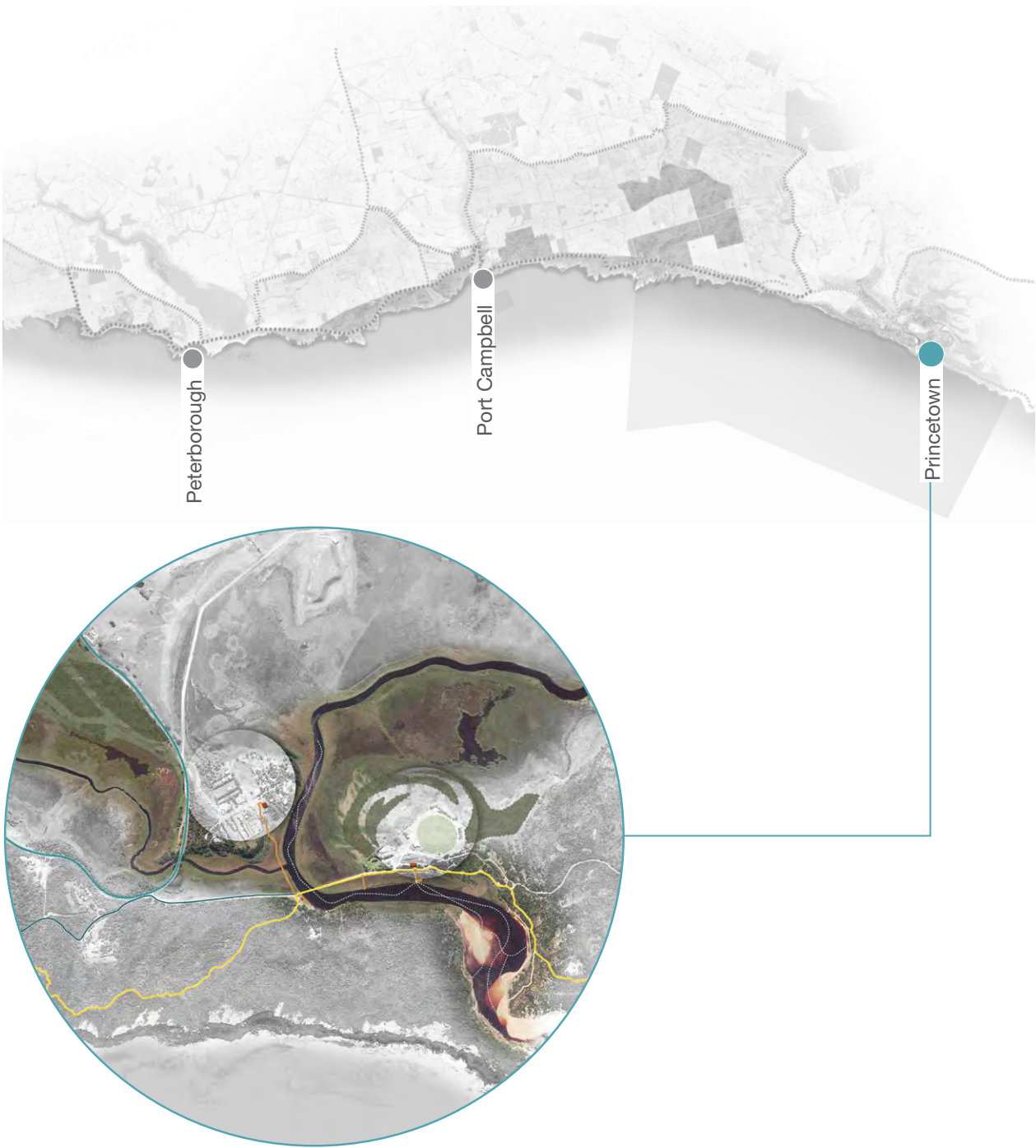
Princetown’s relationship with the Gellibrand River, its wetlands and beach connections, coupled with the Great Ocean Walk and local camping, has informed how the master plan might better connect the town to the Great Otway National Park and Port Campbell National Park.

A cluster of low-key eco-tourism, adventure and recreation opportunities, including wetland boardwalks, viewing hides, a kayak/canoe, fishing and bicycle hub and a new trail loop to the Glenample Homestead and associated precinct, are proposed. This will be done in consultation with Corangamite Catchment Management Authority to provide better facilities to connect visitors with the Gellibrand River and estuary.

The existing boardwalk from the township through to the Gellibrand River is proposed to intersect at a new ‘trail head’ for the Great Ocean Walk and 12 Apostles Trail providing walkers and riders direct connection to services, accommodation and amenities.

A visitor pod comprising a shuttle transport and bicycle share stop is proposed in the township to enable locals access to public transport and visitors the opportunity to connect to the town and enjoy one of the walking loops. Significant additional parking is not proposed.

The master plan proposes the renewal and upgrade of the existing camping ground to potentially include “glamping”, cabins and better provide for the needs of touring motor homes and “big rigs”. This supports the trail head and eco-tourism offer.



Cliftons Beach on the edge of the Great Ocean Walk





Trail head, shelter and wayfinding – GASP, Tasmania, Room 11, photo by Ben Hosking



Ketchup's Bank Glamping, Queensland, photo from paperbackcamp.com.au



Camping structures



Hikers huts, photo from paperbackcamp.com.au



The Princetown to Glenample trail





Prinetown Township Interface Plan

NOTE: Trail boardwalk and lookout alignments are shown as indicative only. Further detailed design, alignment and planning approvals, including a cultural heritage management plan and consultation with Traditional Owners, will be required prior to implementation. Setting parameters in the Experience + Wayfinding Strategy inform any development opportunities.





Site Program

- Marine Environs
- National Park
- Coastal Hinterland

- 1

+

Prinetown to Glenample Trail
- 2

+

Potential Private Section Tourism Development Opportunity
- 3

+

Lookout / Telecommunication for Local WiFi
- 4

+

+

Great Ocean Walk and 12 Apostles Trail Head
- 5

+

Prinetown Camping Ground
- 6

+

+

Eco-adventure, Kayak and Canoe Hire
- 7

+

+

+

Gellibrand River Walk

Site Key

- Park Boundary
- Existing walking track [retained]
- Proposed walking track
- Great Ocean Road "Parkway"
- Boardwalks / Viewing deck
- Proposed Visitor Pods
- 12 Apostles Trail - optional alignment
- Great Ocean Walk
- Potential private sector tourism development opportunity
- Potential revegetation (nominal area illustrated)

Site Elements

- ACCOMMODATION

Education / Seminar Centre

Up-market Accommodation

+

Eco-lodge

+

Affordable Accommodation

+

Self-contained Units

+

Caravan / Motor Homes

+

Hiker / Cycle Huts

+

Camping / "Glamping"
- EXPERIENCE

+

Visitor Pods / Interpretive & Information

Museum / Gallery

+

Food / Beverage

Hospitality / Entertainment / Restaurant

+

Lookouts & Hides

Health / Wellbeing Recreation / Spa

+

Kayak & Canoe Facilities, fishing platforms

+

Guided Tours

Helicopter Tours
- ANCILLARY

+

Seating / Decks / Boardwalks & Trails

+

Shuttle Bus Service and Bicycle Share

Parking - Tour buses, private vehicles

+

Trail Head / Rest Shelters / Picnic Areas

+

Toilet / Change / Beach Showers



Fogo Island, Bridge Studio by Saunders Architects



Emscher Camp, Germany